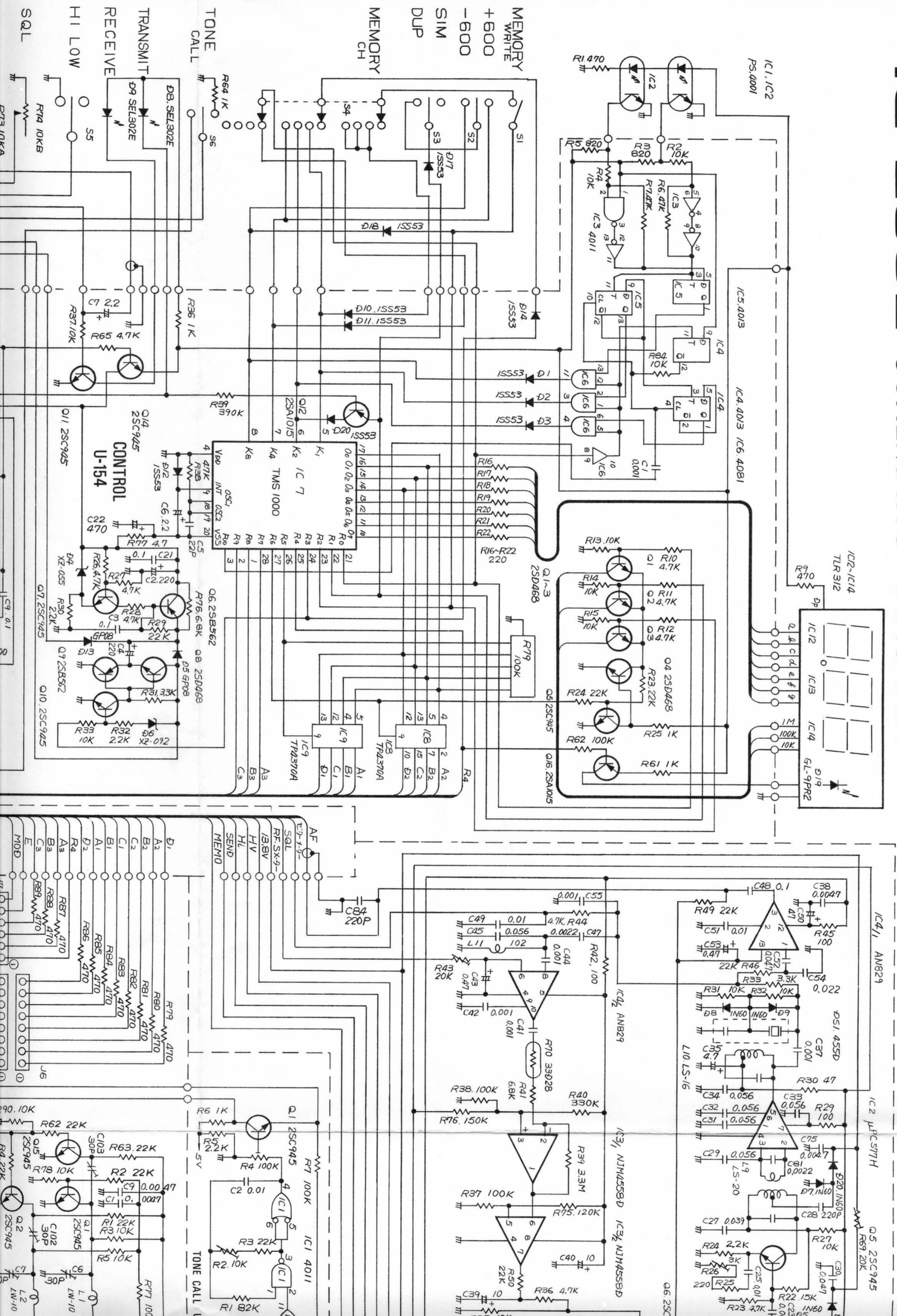
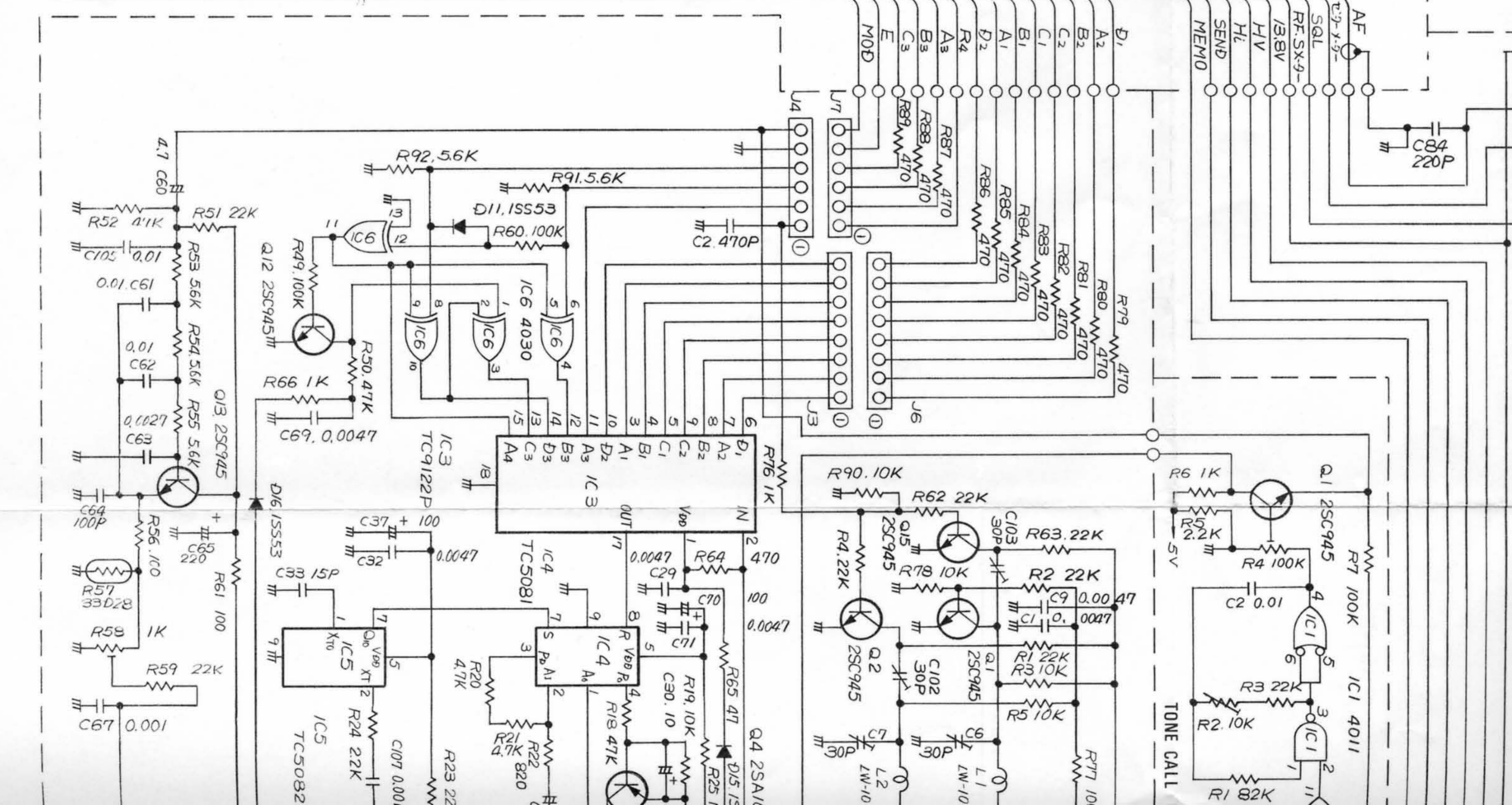
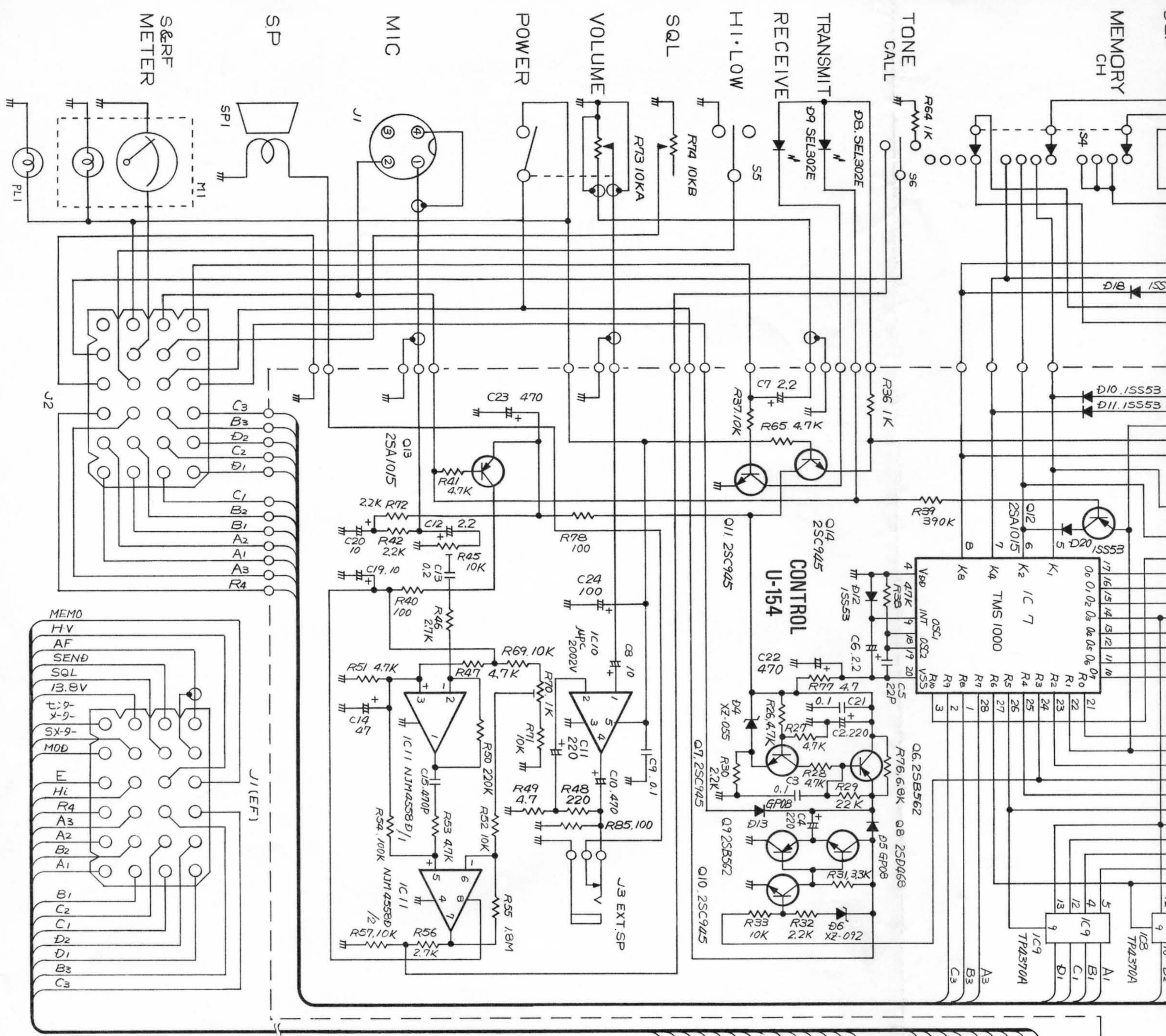
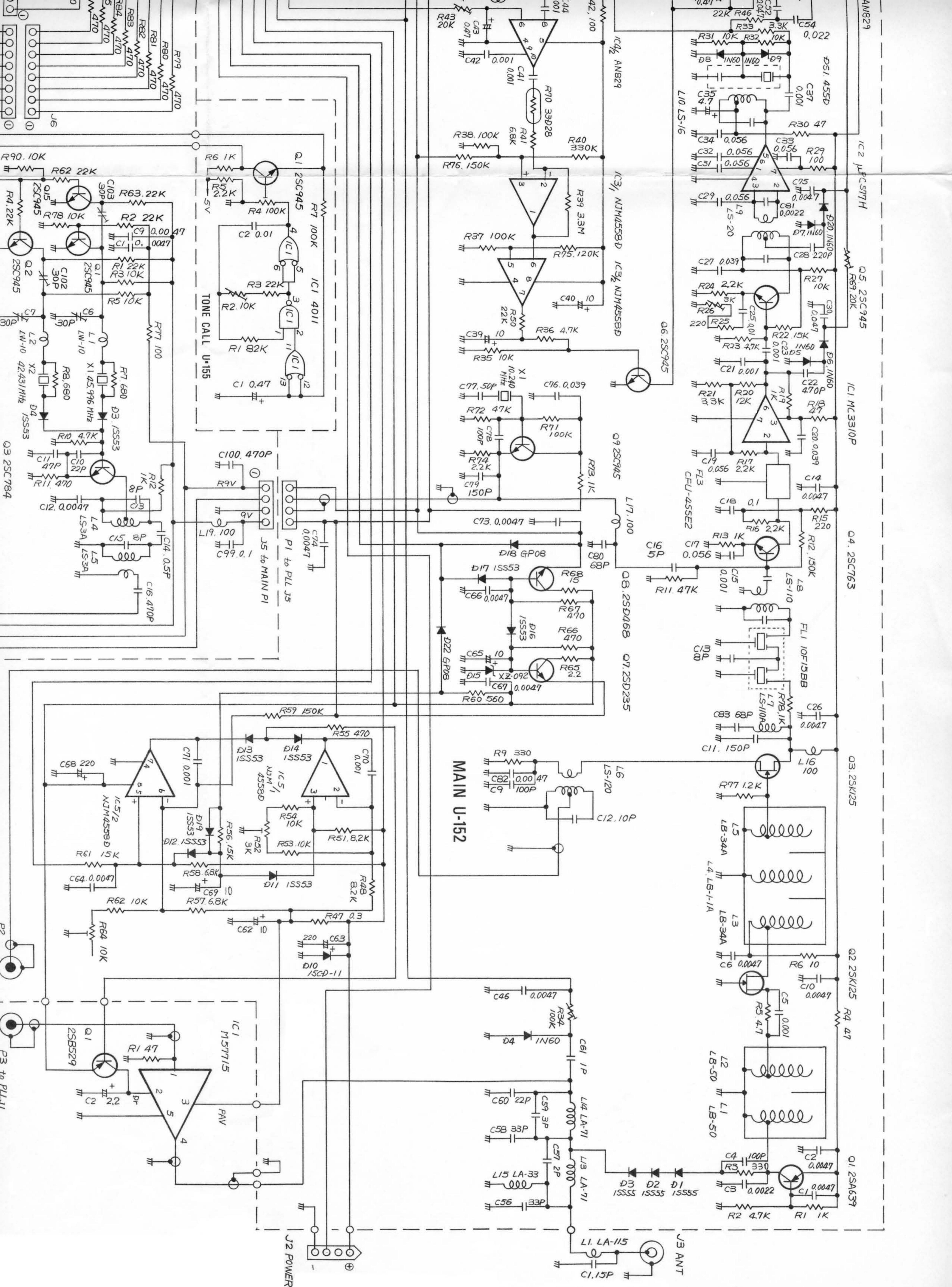


IC-280E SCHEMATIC DIAGRAM







TONE CALL U-155

MAIN U-152

PAV

IC1 MC3310P
IC2 JFC571H
IC3 J1 NJM4558D
IC3 J2 NJM4558D
IC4 AN829
IC5 25C945

R1 22K
R2 22K
R3 10K
R4 100K
R5 10K
R6 1K
R7 100K
R8 10K
R9 10K
R10 10K
R11 10K
R12 10K
R13 10K
R14 10K
R15 10K
R16 10K
R17 10K
R18 10K
R19 10K
R20 10K
R21 10K
R22 10K
R23 10K
R24 10K
R25 10K
R26 10K
R27 10K
R28 10K
R29 10K
R30 10K
R31 10K
R32 10K
R33 10K
R34 10K
R35 10K
R36 10K
R37 10K
R38 10K
R39 10K
R40 10K
R41 10K
R42 10K
R43 10K
R44 10K
R45 10K
R46 10K
R47 10K
R48 10K
R49 10K
R50 10K
R51 10K
R52 10K
R53 10K
R54 10K
R55 10K
R56 10K
R57 10K
R58 10K
R59 10K
R60 10K
R61 10K
R62 10K
R63 10K
R64 10K
R65 10K
R66 10K
R67 10K
R68 10K
R69 10K
R70 10K
R71 10K
R72 10K
R73 10K
R74 10K
R75 10K
R76 10K
R77 10K
R78 10K
R79 10K
R80 10K
R81 10K
R82 10K
R83 10K
R84 10K
R85 10K
R86 10K
R87 10K
R88 10K
R89 10K
R90 10K

C1 0.001
C2 0.001
C3 0.001
C4 0.001
C5 0.001
C6 0.001
C7 0.001
C8 0.001
C9 0.001
C10 0.001
C11 0.001
C12 0.001
C13 0.001
C14 0.001
C15 0.001
C16 0.001
C17 0.001
C18 0.001
C19 0.001
C20 0.001
C21 0.001
C22 0.001
C23 0.001
C24 0.001
C25 0.001
C26 0.001
C27 0.001
C28 0.001
C29 0.001
C30 0.001
C31 0.001
C32 0.001
C33 0.001
C34 0.001
C35 0.001
C36 0.001
C37 0.001
C38 0.001
C39 0.001
C40 0.001
C41 0.001
C42 0.001
C43 0.001
C44 0.001
C45 0.001
C46 0.001
C47 0.001
C48 0.001
C49 0.001
C50 0.001
C51 0.001
C52 0.001
C53 0.001
C54 0.001
C55 0.001
C56 0.001
C57 0.001
C58 0.001
C59 0.001
C60 0.001
C61 0.001
C62 0.001
C63 0.001
C64 0.001
C65 0.001
C66 0.001
C67 0.001
C68 0.001
C69 0.001
C70 0.001
C71 0.001
C72 0.001
C73 0.001
C74 0.001
C75 0.001
C76 0.001
C77 0.001
C78 0.001
C79 0.001
C80 0.001
C81 0.001
C82 0.001
C83 0.001
C84 0.001
C85 0.001
C86 0.001
C87 0.001
C88 0.001
C89 0.001
C90 0.001
C91 0.001
C92 0.001
C93 0.001
C94 0.001
C95 0.001
C96 0.001
C97 0.001
C98 0.001
C99 0.001
C100 0.001

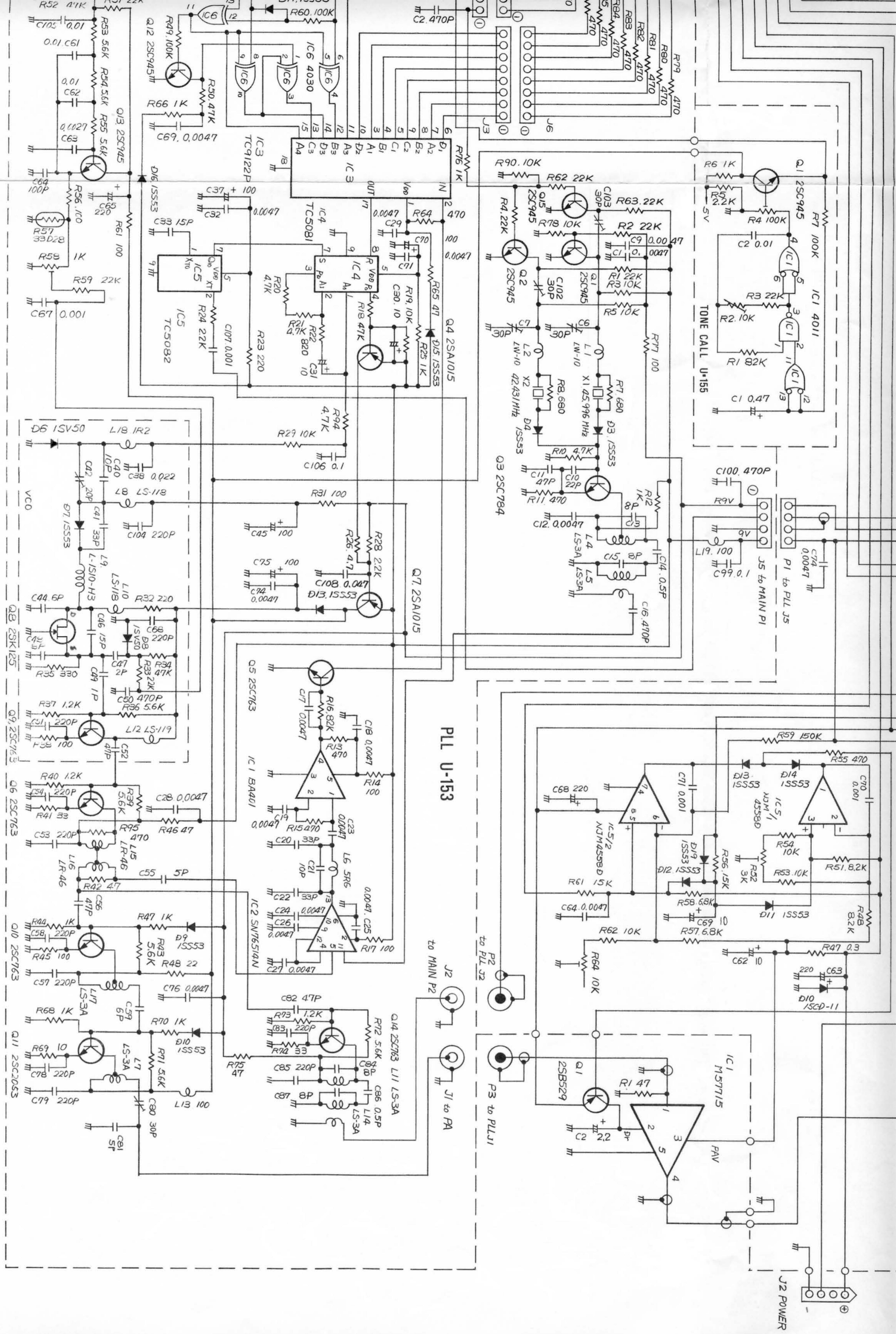
D1 1N60
D2 1N60
D3 1N60
D4 1N60
D5 1N60
D6 1N60
D7 1N60
D8 1N60
D9 1N60
D10 1N60
D11 1N60
D12 1N60
D13 1N60
D14 1N60
D15 1N60
D16 1N60
D17 1N60
D18 1N60

Q1 2SC945
Q2 2SC945
Q3 2SC945
Q4 2SC945
Q5 2SC945
Q6 2SC945
Q7 2SD235
Q8 2SD468
Q9 2SC945

L1 LA-115
L2 LA-71
L3 LA-71
L4 LA-71
L5 LA-33
L6 LS-120
L7 LS-110A
L8 LS-110
L9 LS-20
L10 LS-16

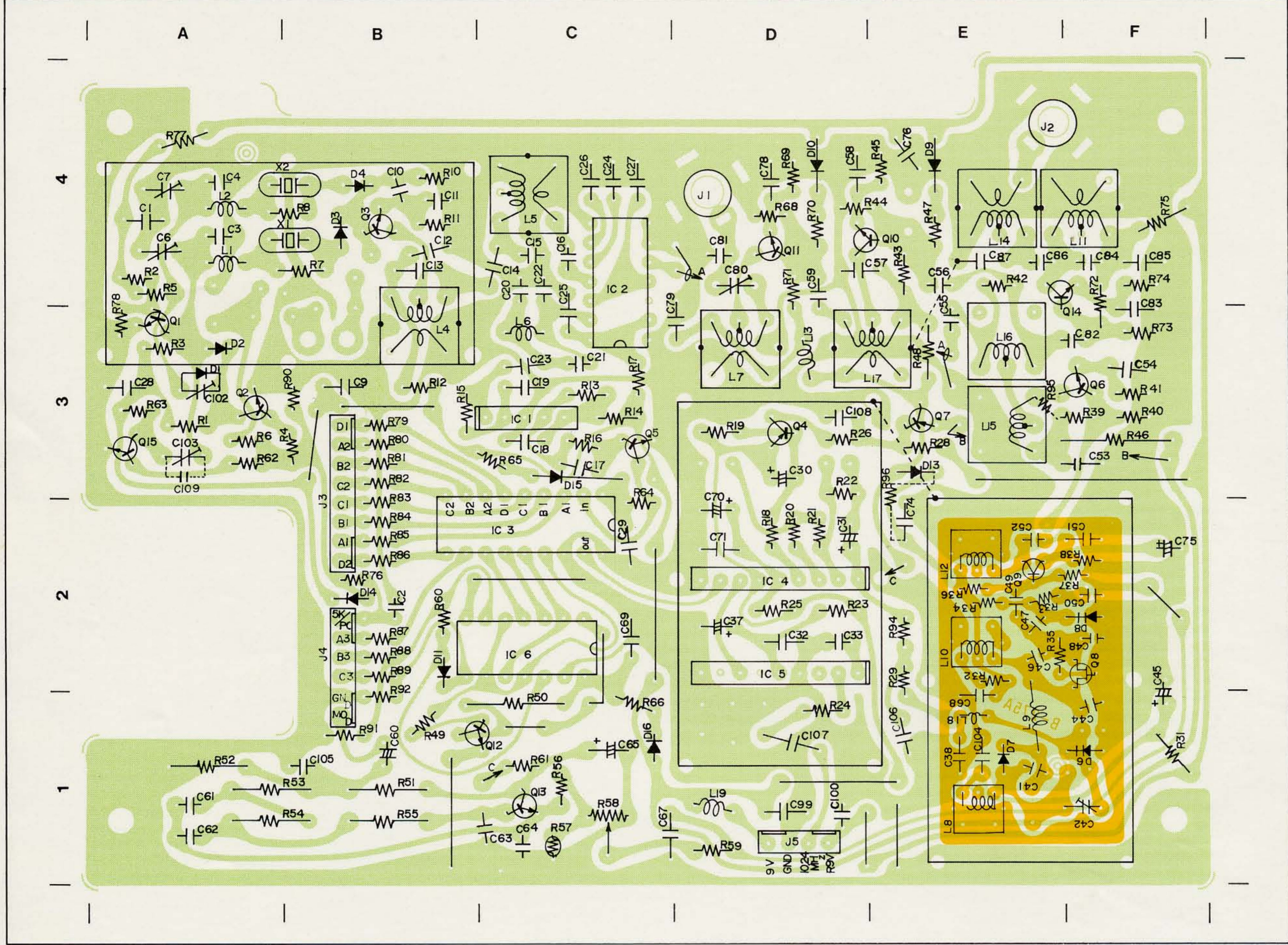
FL1 10F15BB
FL2 10F15BB

J1 ANT
J2 POWER
J3 ANT
J4
J5 to MAIN P1
J6
J7
J8
J9
J10
J11
J12
J13
J14
J15
J16
J17
J18
J19
J20
J21
J22
J23
J24
J25
J26
J27
J28
J29
J30
J31
J32
J33
J34
J35
J36
J37
J38
J39
J40
J41
J42
J43
J44
J45
J46
J47
J48
J49
J50
J51
J52
J53
J54
J55
J56
J57
J58
J59
J60
J61
J62
J63
J64
J65
J66
J67
J68
J69
J70
J71
J72
J73
J74
J75
J76
J77
J78
J79
J80
J81
J82
J83
J84
J85
J86
J87
J88
J89
J90
J91
J92
J93
J94
J95
J96
J97
J98
J99
J100

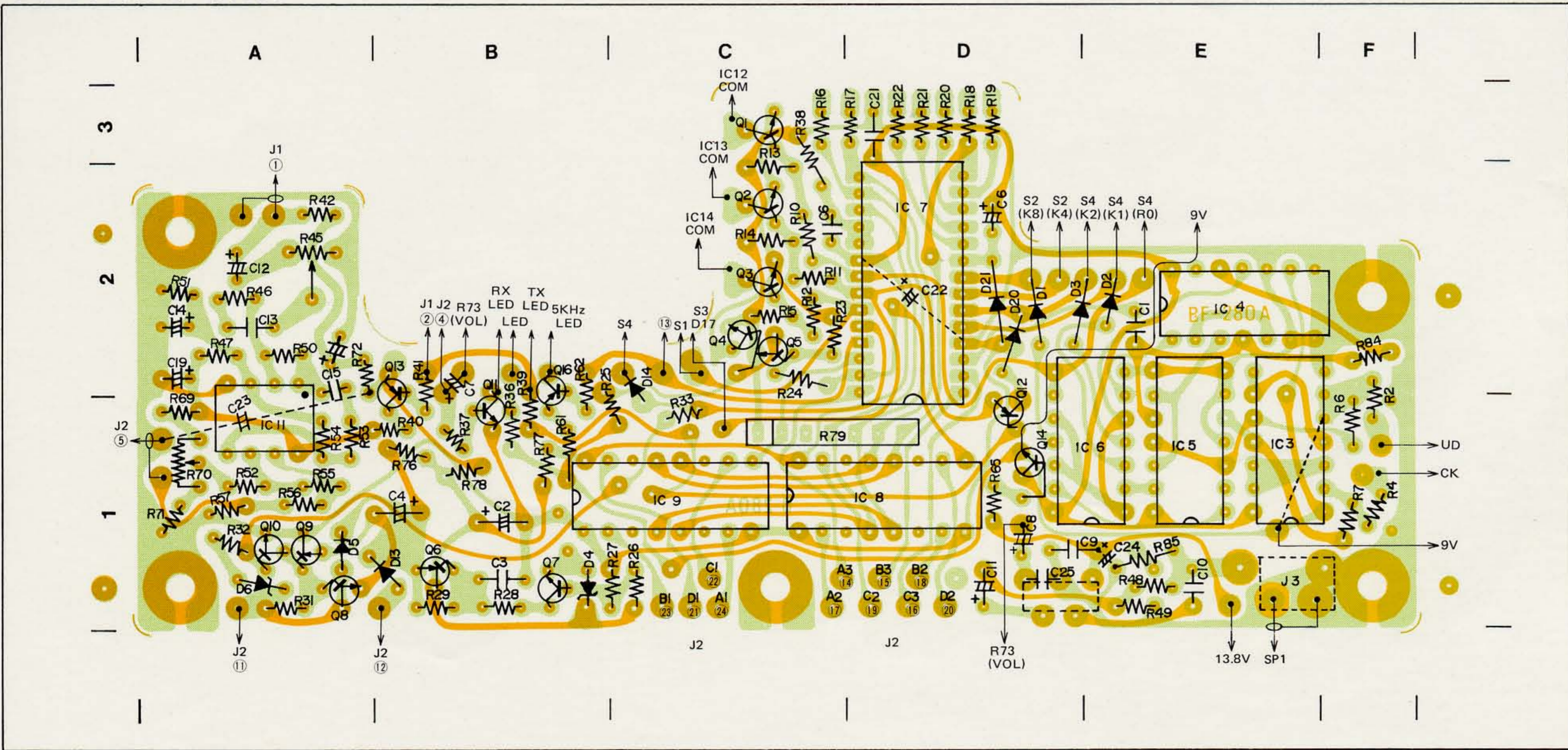


SECTION XII P.C. BOARD LAYOUT

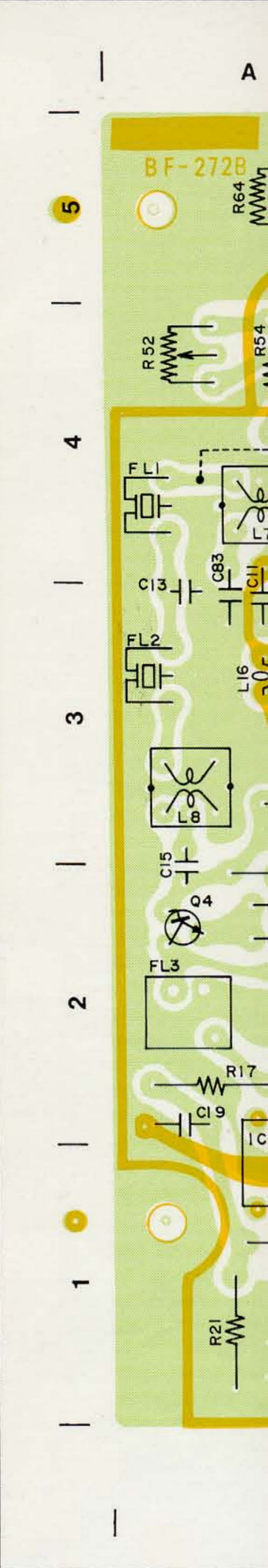
PLL UNIT



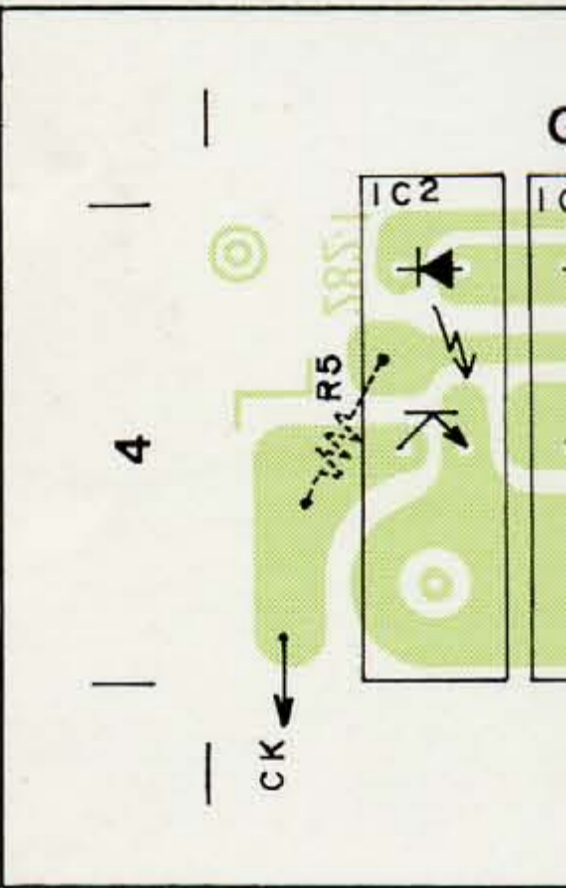
CONTROL UNIT



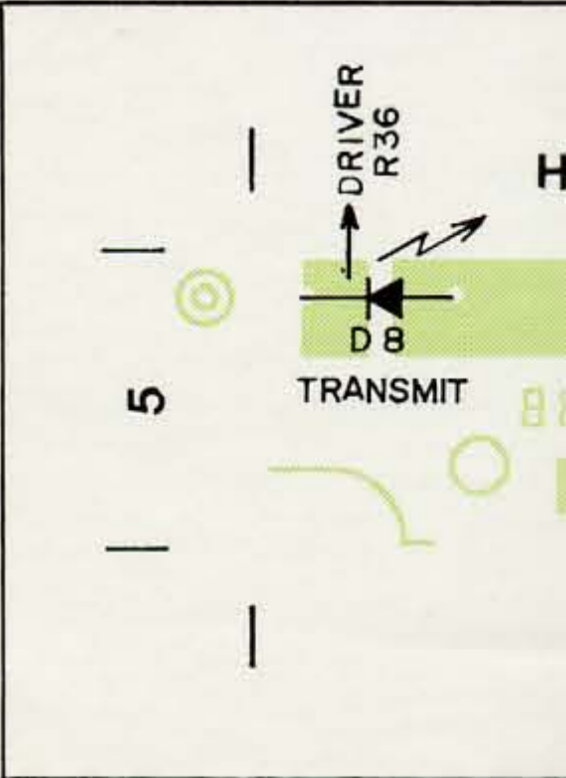
MAIN UNIT



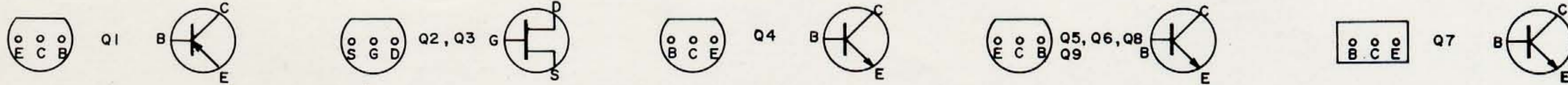
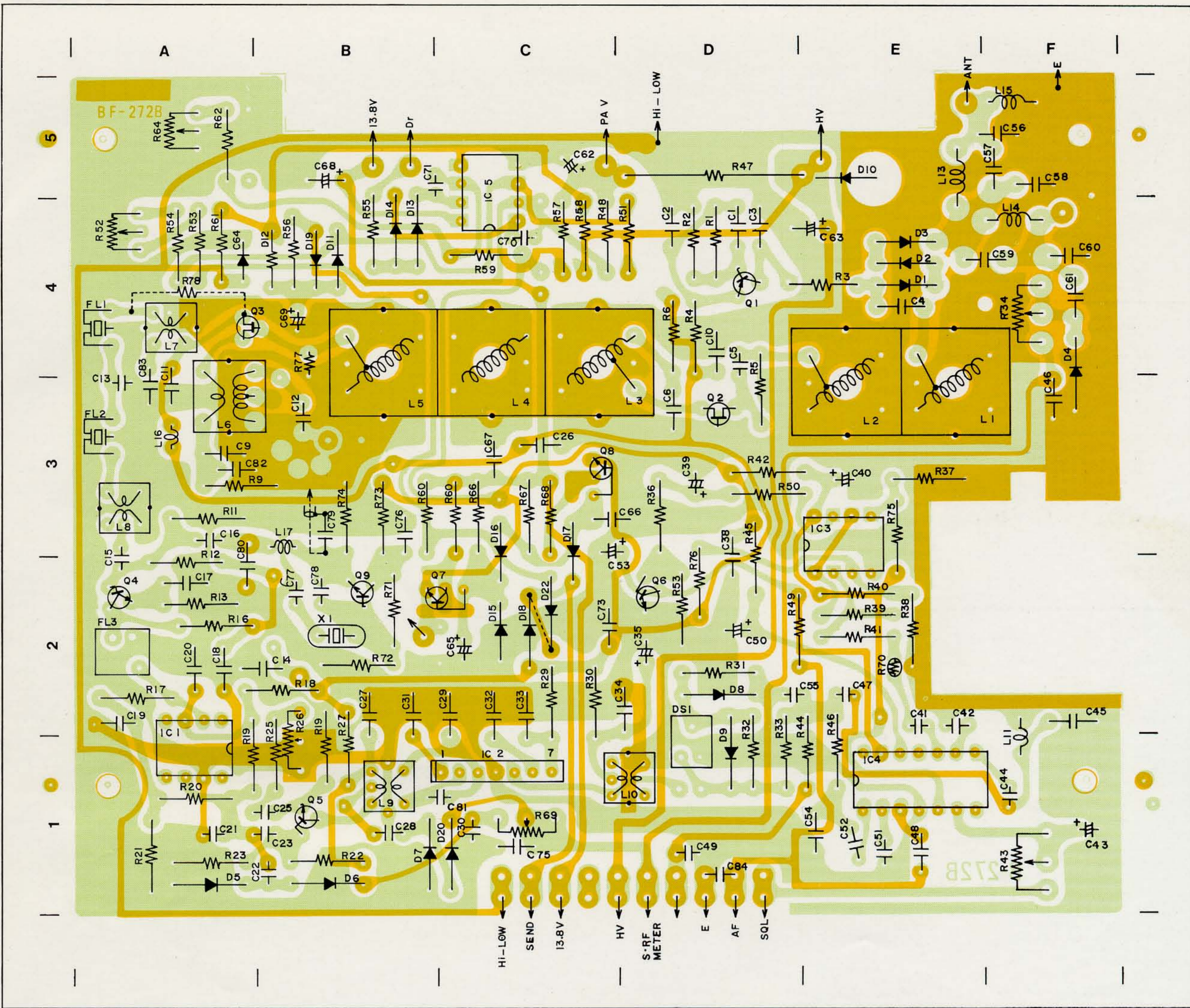
LEI BOARD



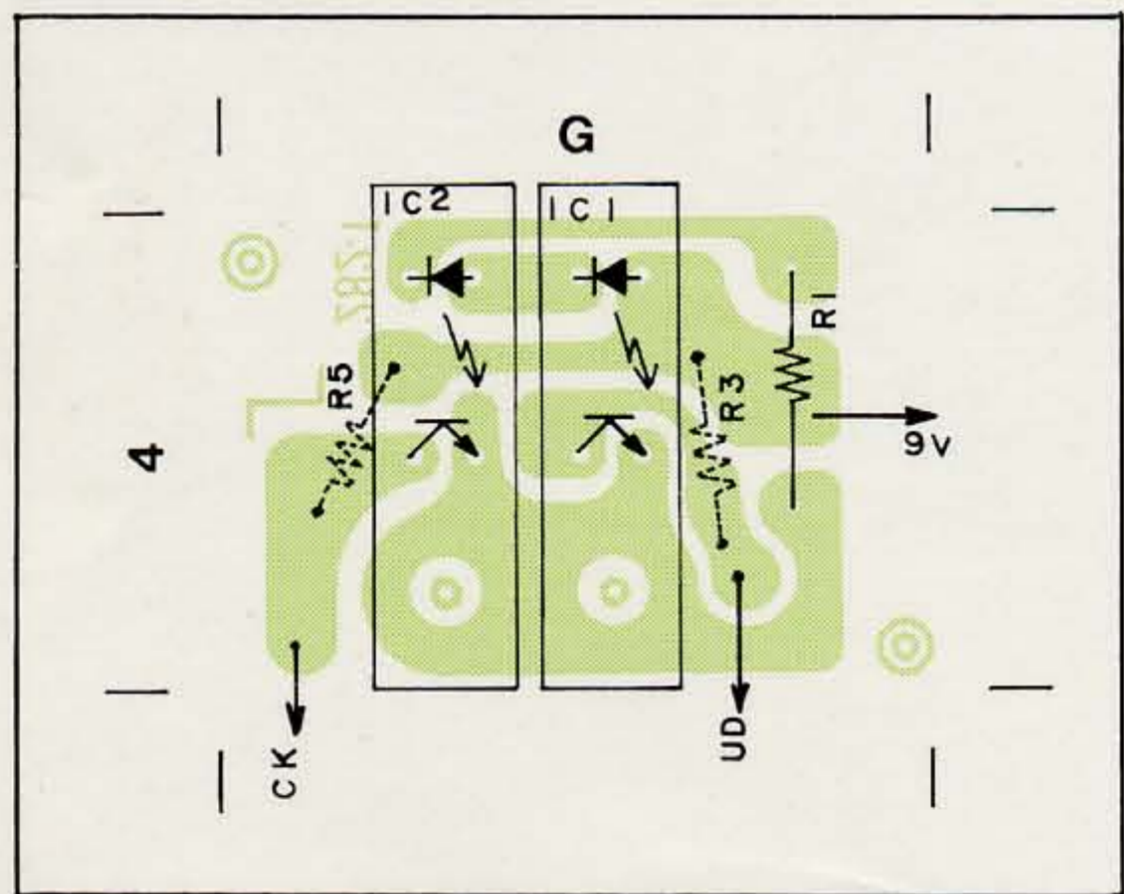
LED UNIT



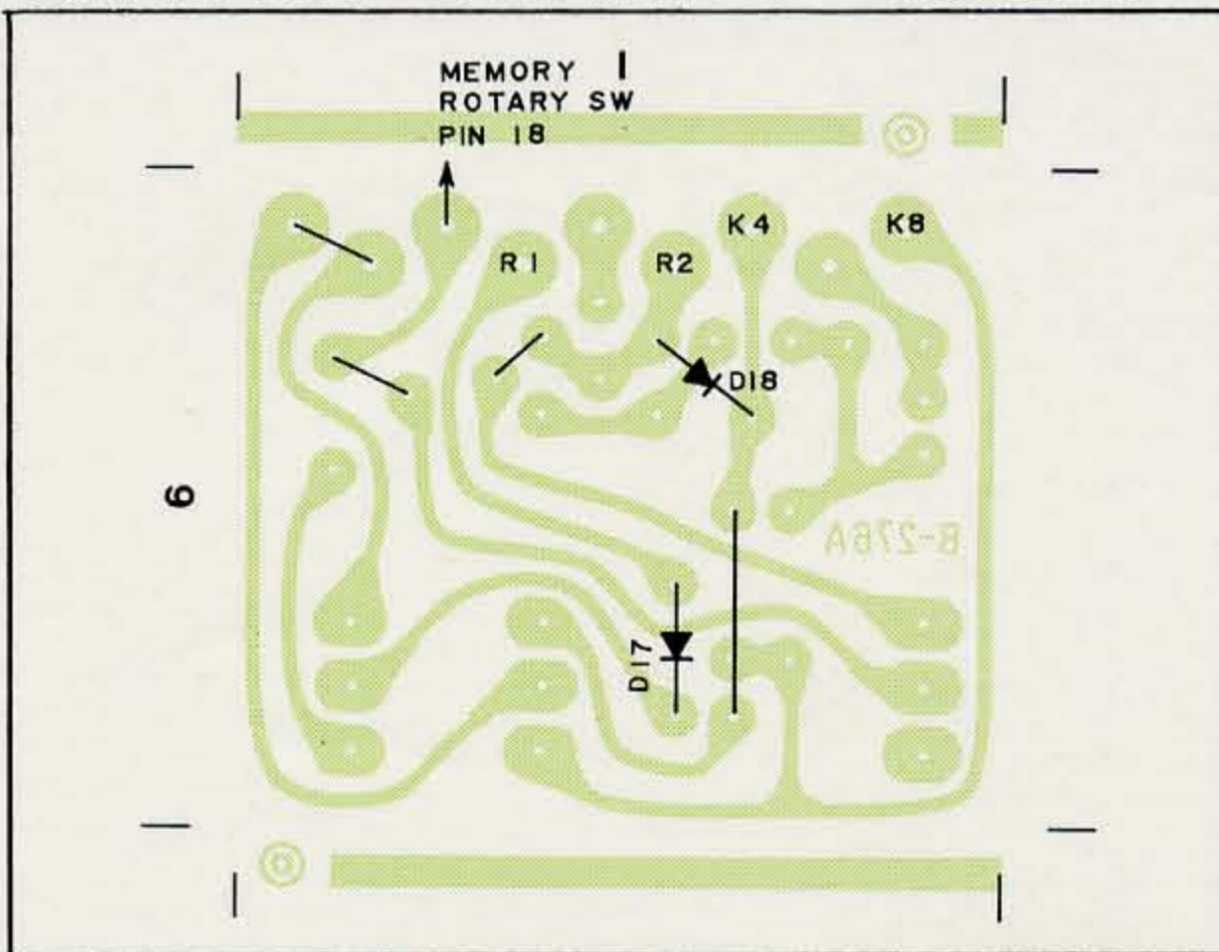
MAIN UNIT



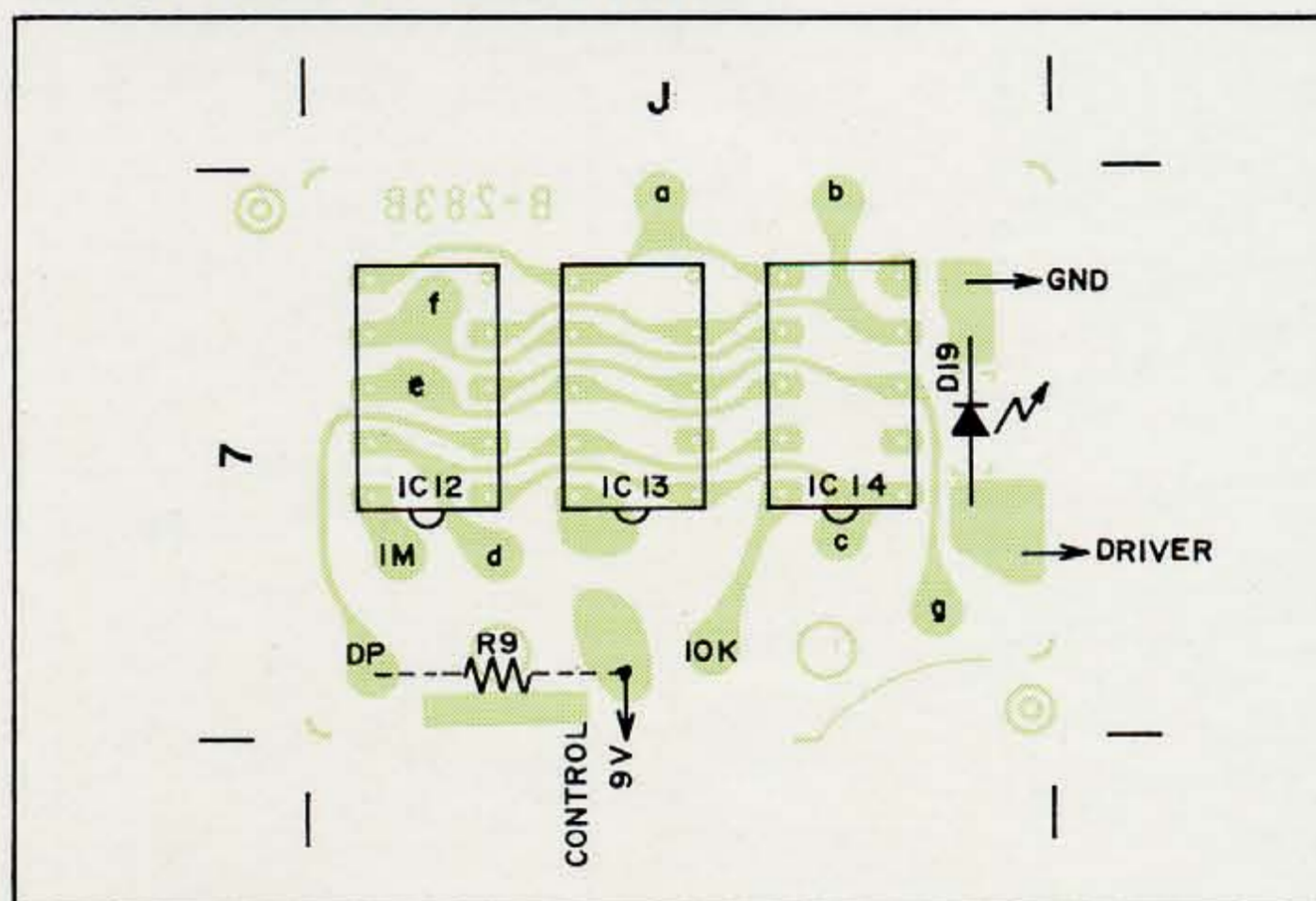
LEI BOARD



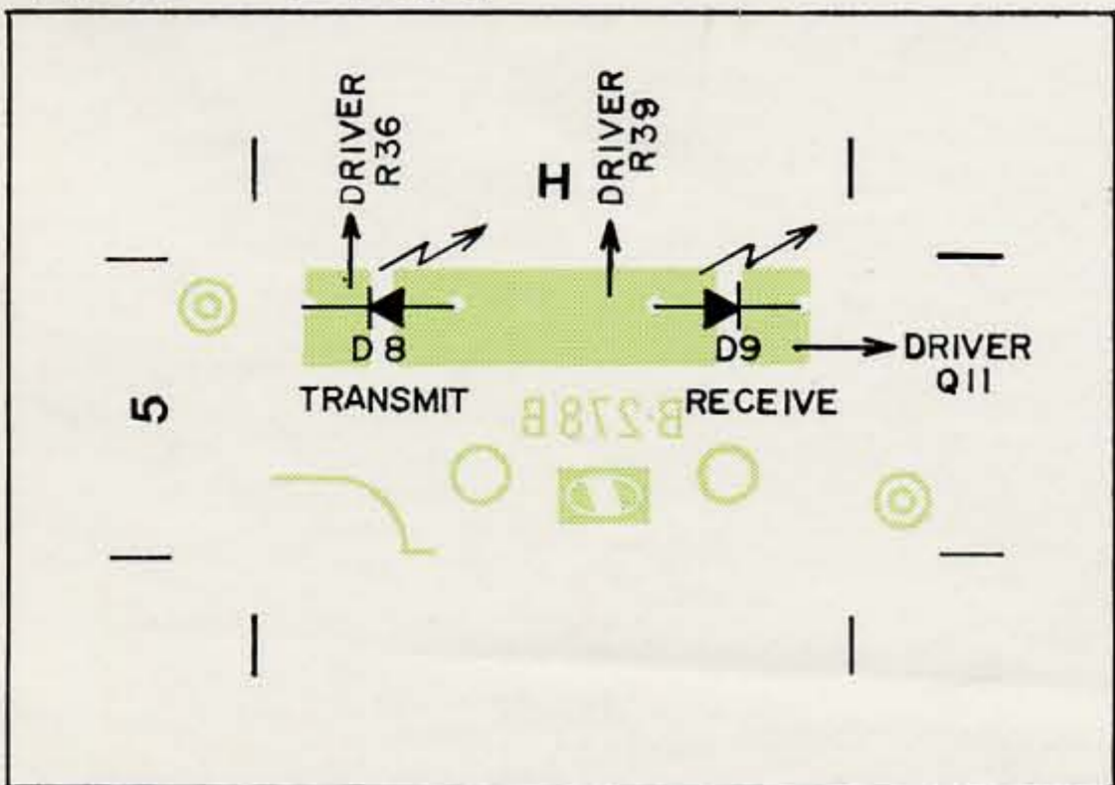
SWITCH BOARD IC-280



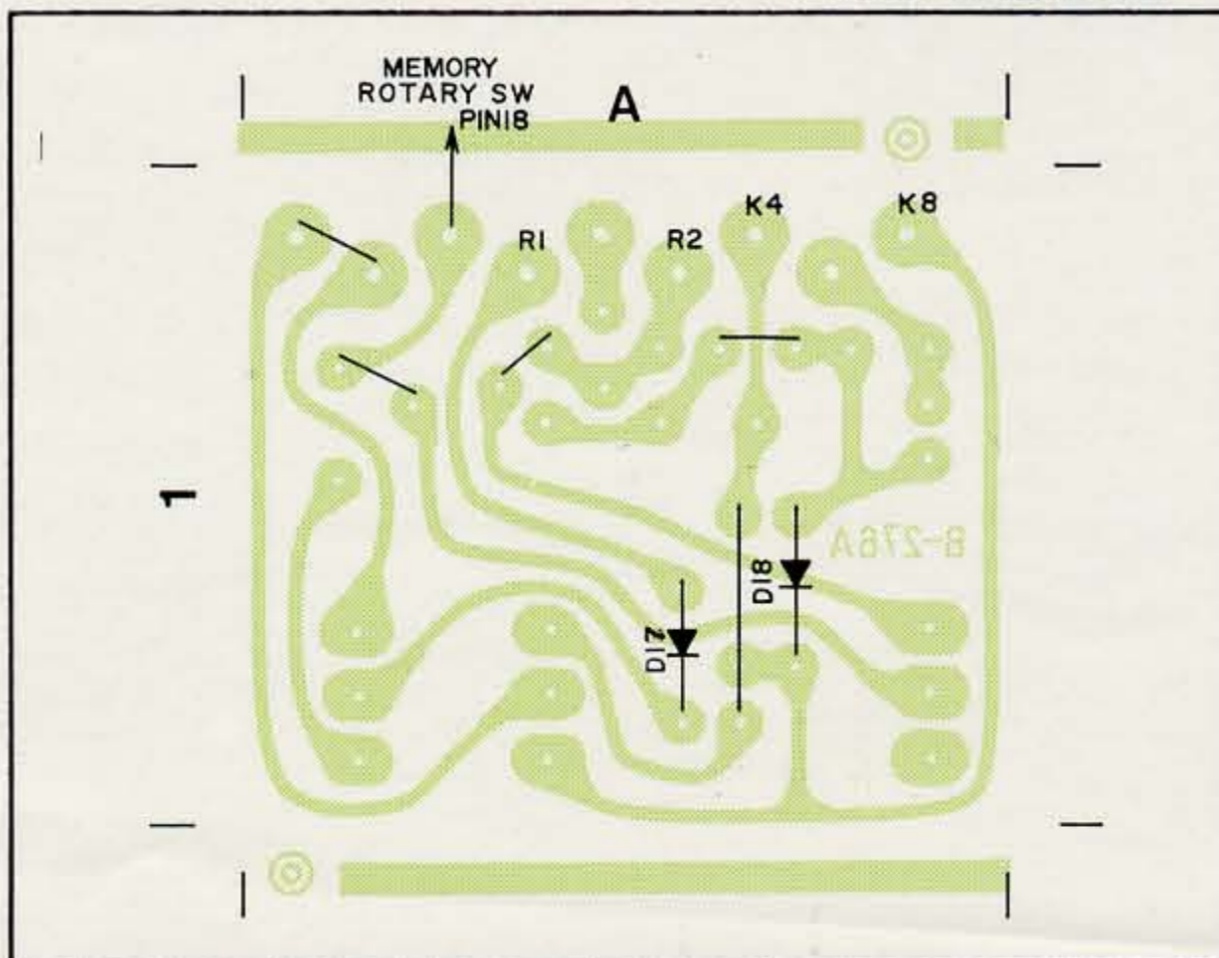
DISPLAY BOARD



LED UNIT



IC-280E



TONE CALL UNIT IC-280E ONLY

