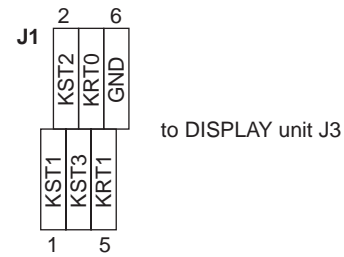
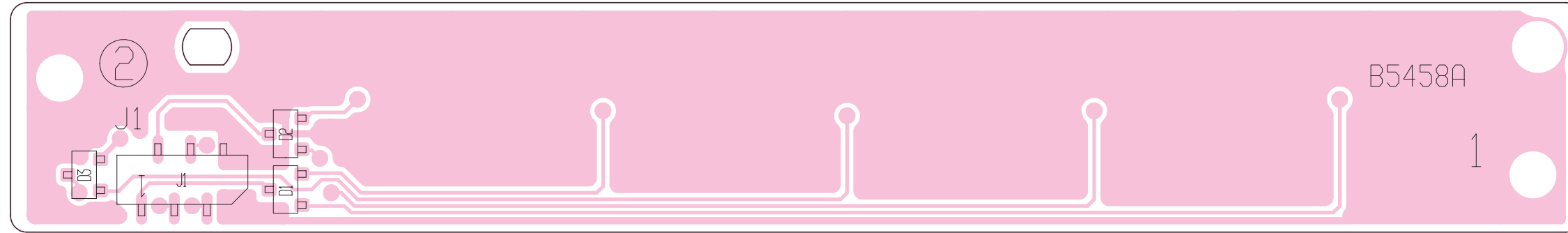


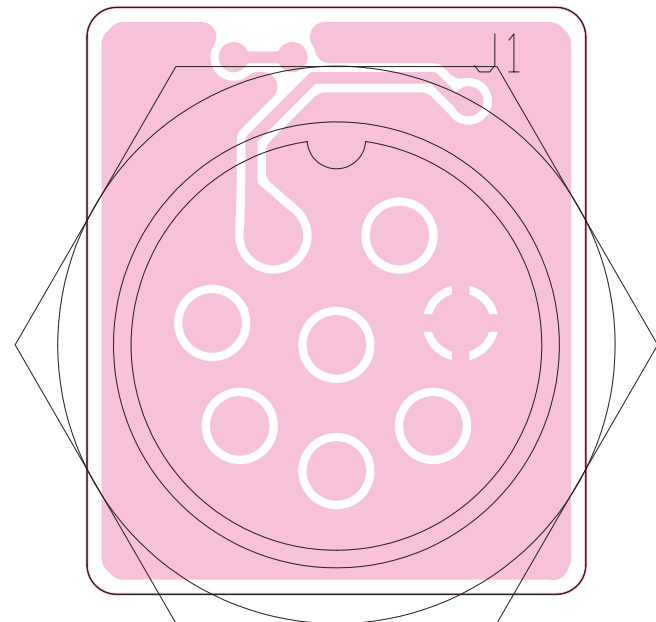
9-4 FUNC BOARD

• TOP VIEW



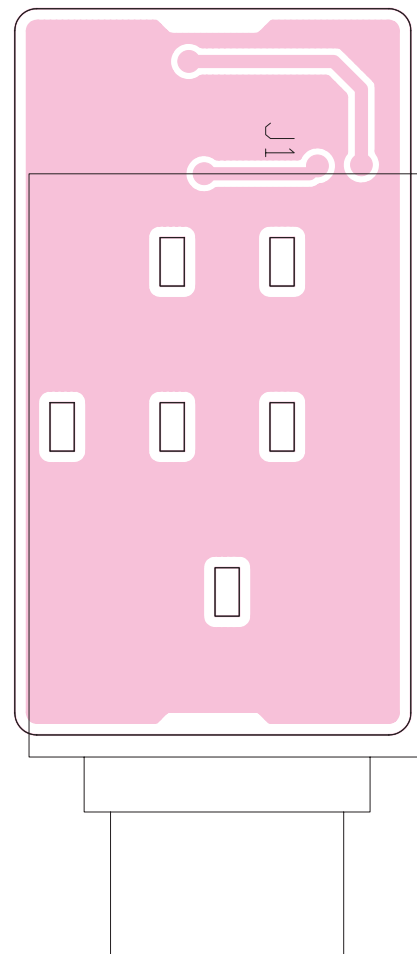
9-5 MIC BOARD

• TOP VIEW



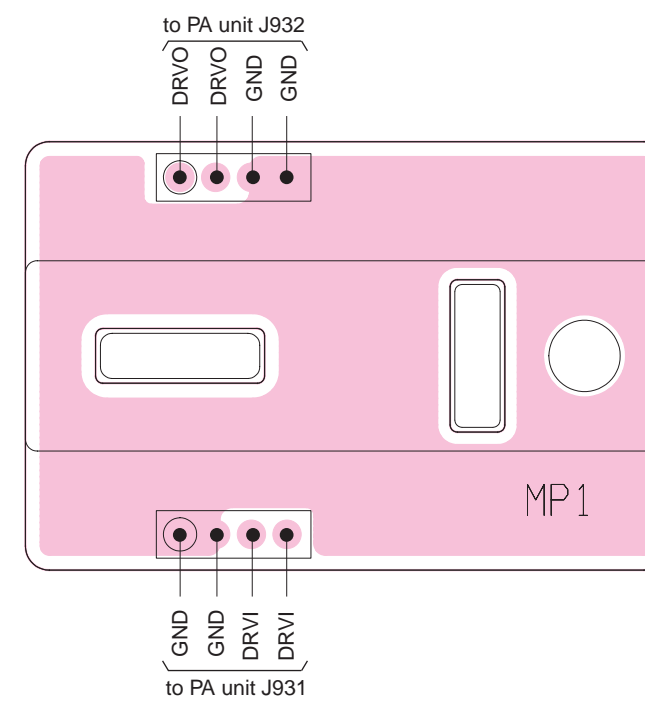
9-6 JACK BOARD

• TOP VIEW



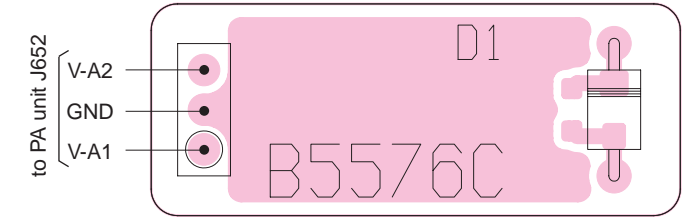
9-7 DRV BOARD

• TOP VIEW



9-8 VARISTOR-A BOARD

• TOP VIEW



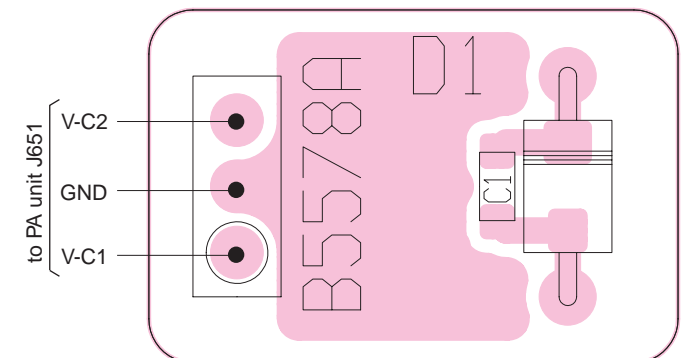
9-9 VARISTOR-B BOARD

• TOP VIEW



9-10 VARISTOR-C BOARD

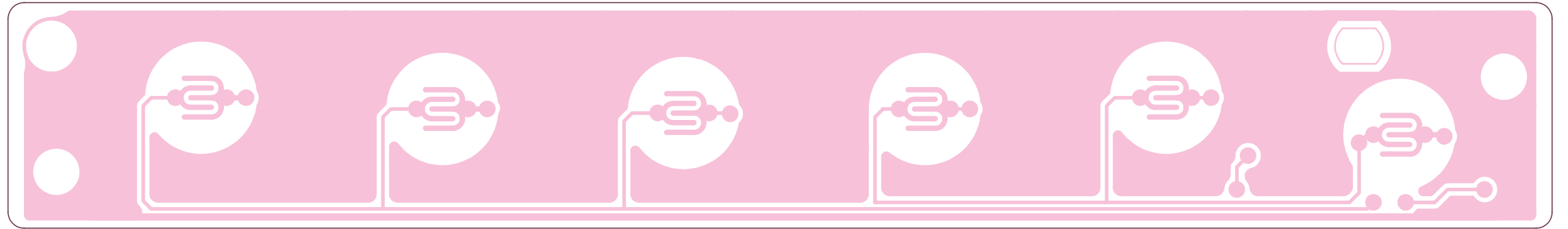
• TOP VIEW



• BOTTOM VIEW (VARISTOR-A BOARD)



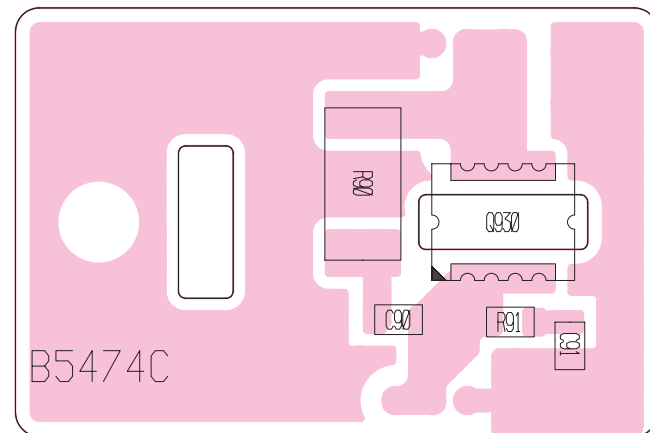
• BOTTOM VIEW (FUNC BOARD)



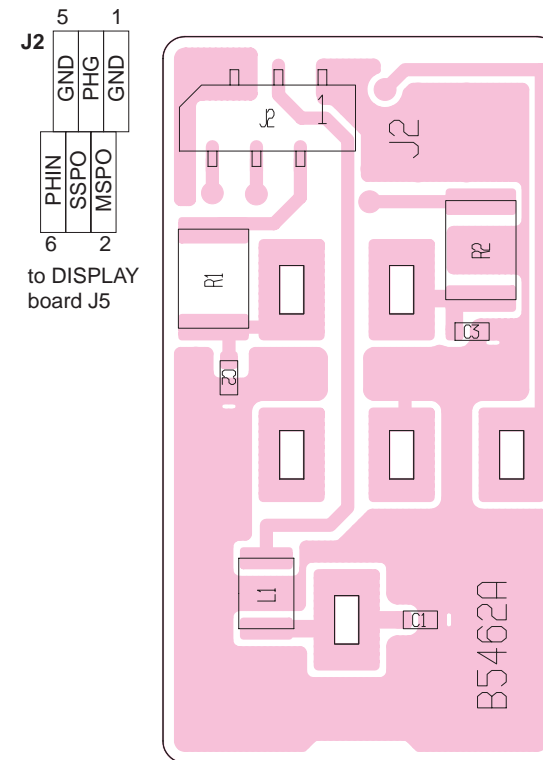
• BOTTOM VIEW (VARISTOR-B BOARD)



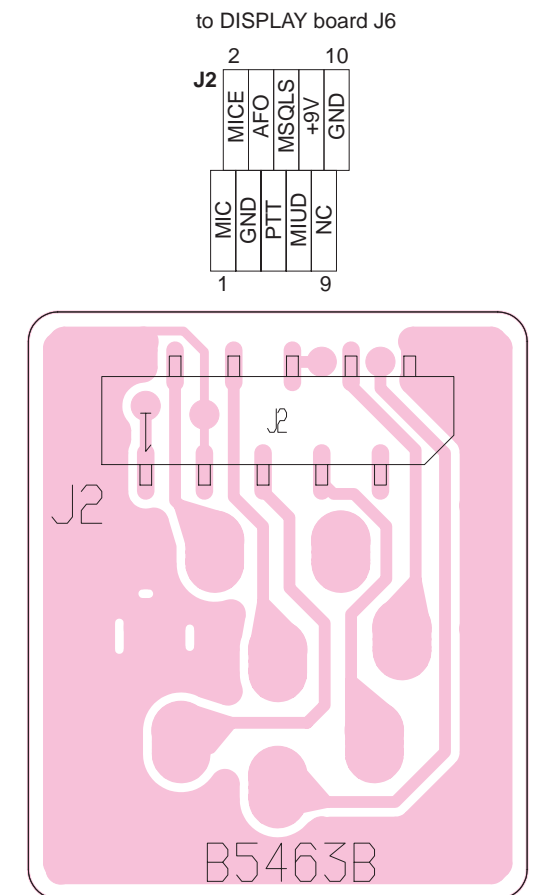
• BOTTOM VIEW (DRV BOARD)



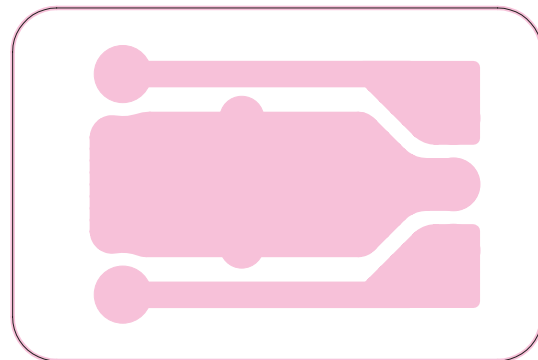
• BOTTOM VIEW (JACK BOARD)



• BOTTOM VIEW (MIC BOARD)

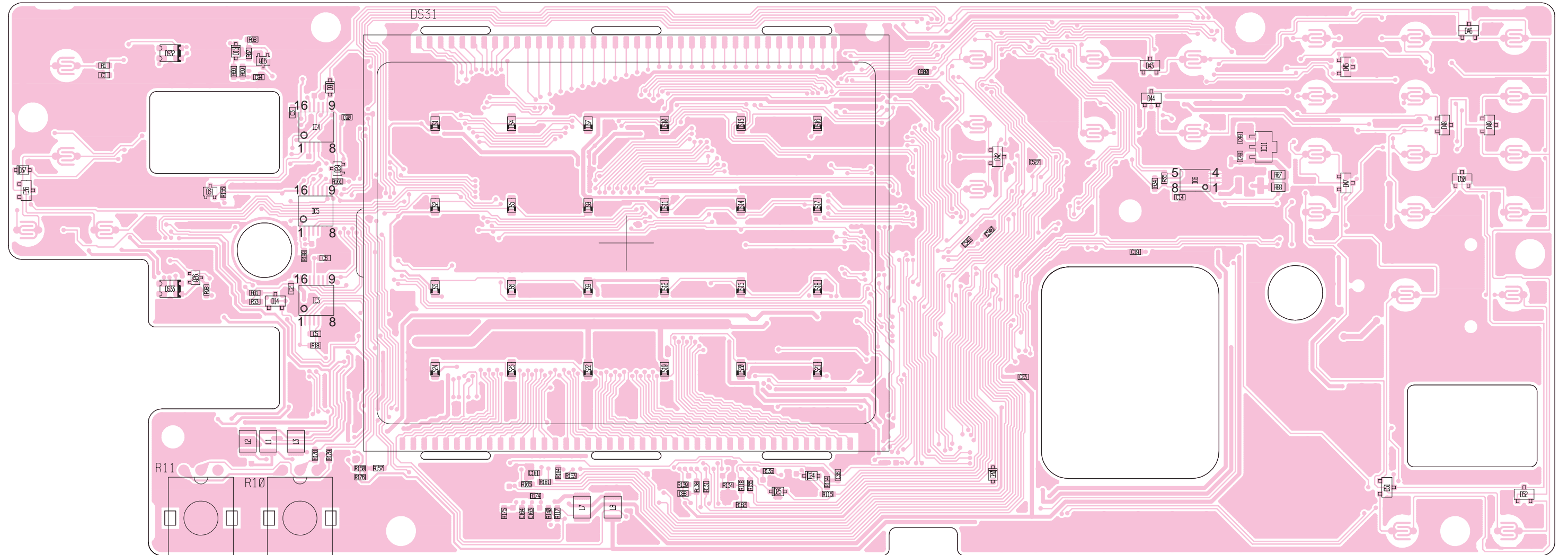


• BOTTOM VIEW (VARISTOR-C BOARD)



9-11 DISPLAY BOARD

• TOP VIEW



• BOTTOM VIEW (DISPLAY BOARD)

to FUNC board J1

J3	
5	1
KST2	KRT0
KST3	KRT1
6	2

to PLL unit J1

J9	
19	1
PCK	14DT
PDAT	PST4
43DT	14UL
14UL	43UL
GND	GND
NC	NC
NC	BFST
14V	14V
+9V	NC
-5V	NC
20	2

to JACK board J2

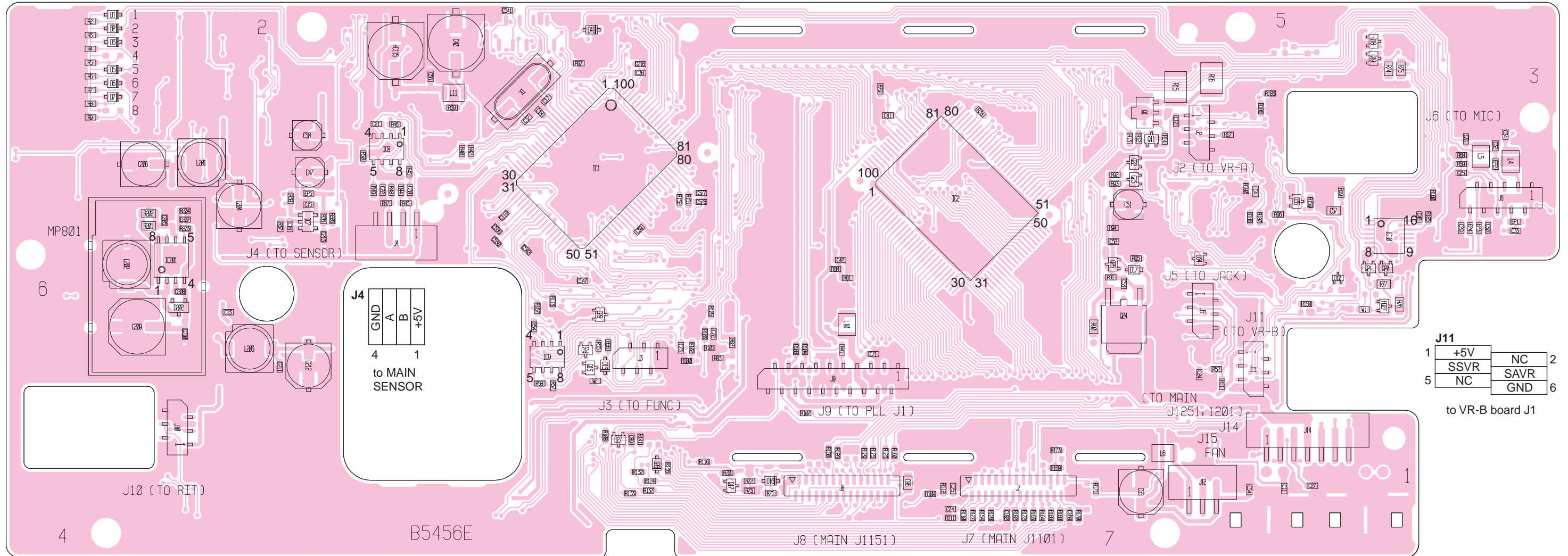
J5			
1	PHIN	GND	2
	SSPO	PHG	
5	MSPO	GND	6

to VR-A board J1

J2			
1	+5V	NC	2
	MSVR	MAVR	
5	NC	GND	6

to MIC board J2

J6	
9	1
MICE	AFO
GND	MSQLS
PTT	MIUD
10	+9V
	NC
	2



J4	
4	1
GND	A
	B
	+5V

to MAIN SENSOR

J11			
1	+5V	NC	2
	SSVR	SAVR	
5	NC	GND	6

to VR-B board J1

J10			
6	GND	NC	5
	RIVR	SFVR	
2	NC	+5V	1

to RIT board J1

J8	
1	29
GND	CIVE
	PTT1
	MIUD
	SEND
	DASH
	SBSY
	KDS
	AGRM
	SQLM
	SMLM
	CTCM
	BEEP
	CENS
	AGRS
	SQLS
	SMLS
	MSC
	OVDV
	TONC
	GND
2	30

to MAIN unit J1151

J7	
1	29
GND	INTM
	RXS
	MCK
	NC
	ETON
	VOXL
	NC
	PDAT
	FORL
	ALCL
	43PV
	12UL
	14PV
	POWS
	12PV
	GND
2	30

to MAIN unit J1101

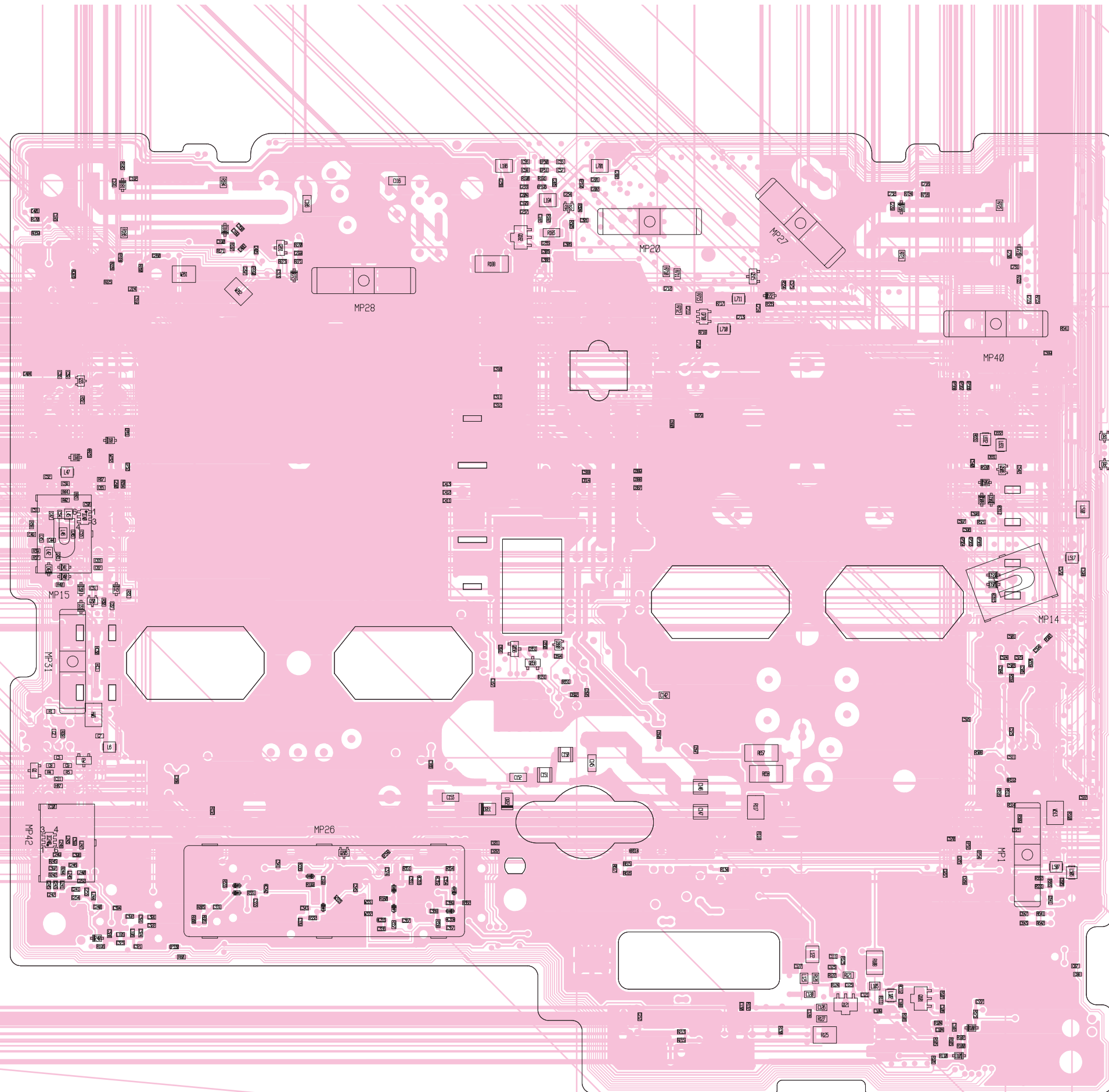
J12	
1	3
GND	FANV
	NC

to FAN

J14	
1	7
MSPO	
SSPO	
PHG	
14V	
HV	
MIC	
MICE	

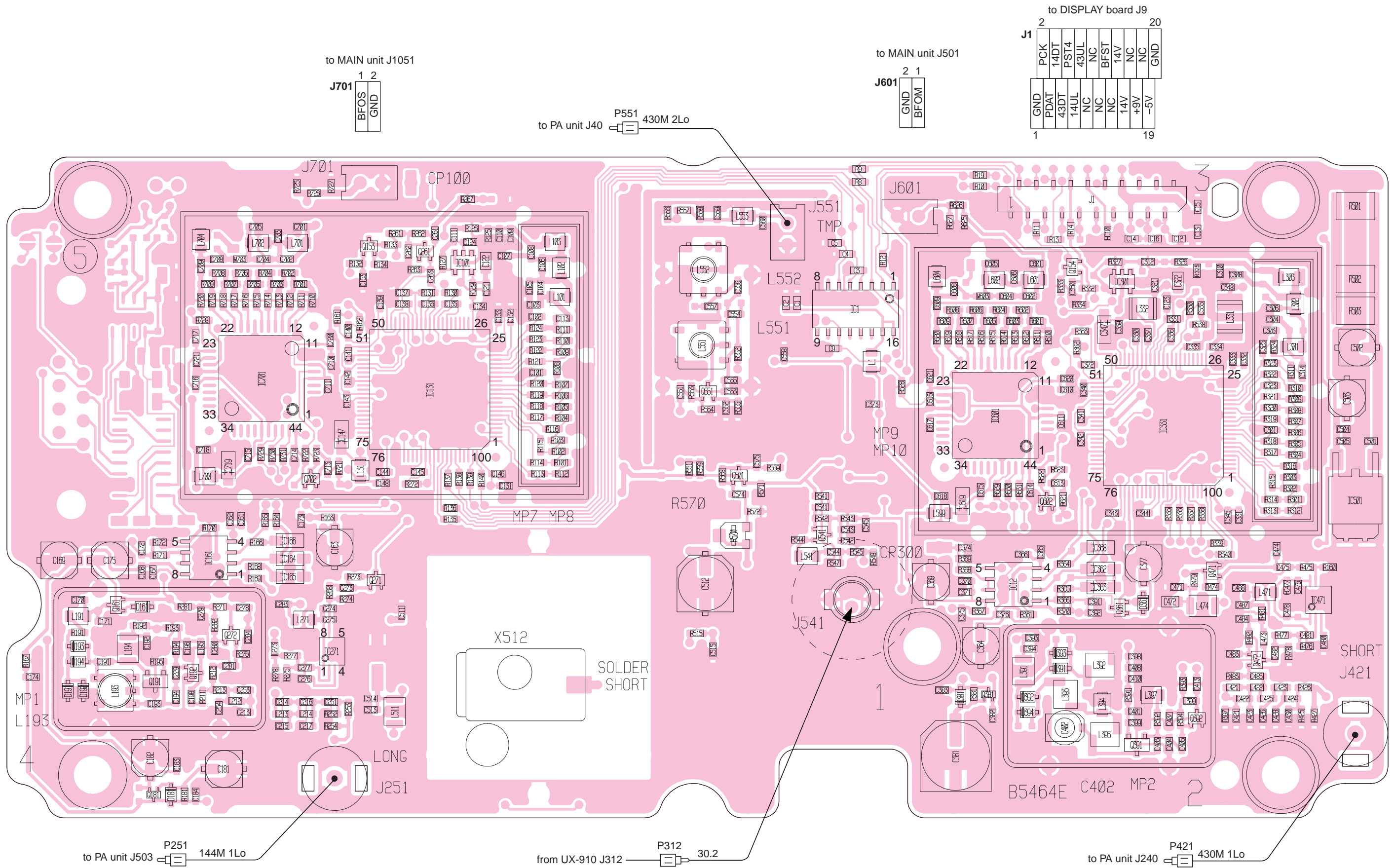
to MAIN unit J1251, J1201

• BOTTOM VIEW (PA UNIT)

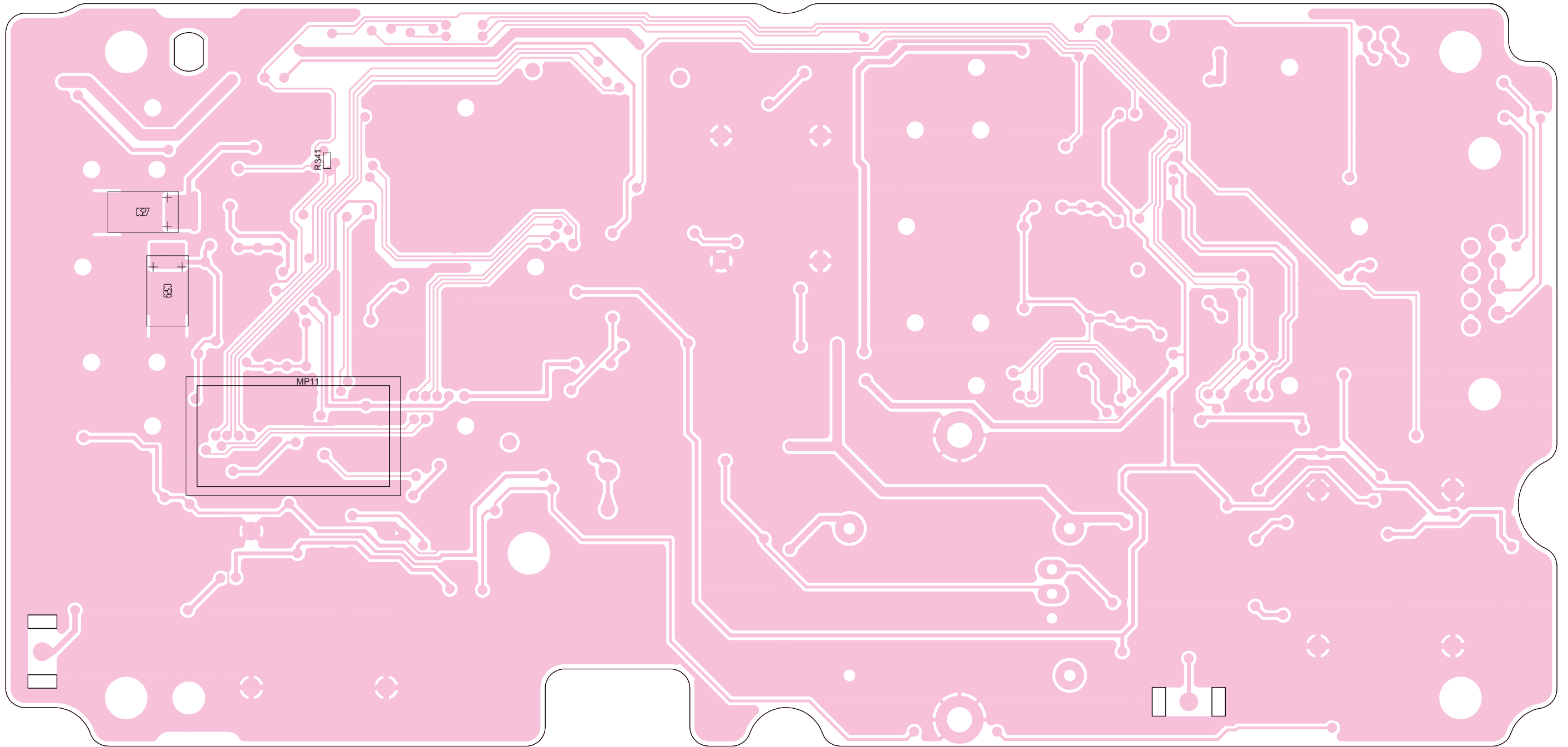


9-13 PLL UNIT

• TOP VIEW

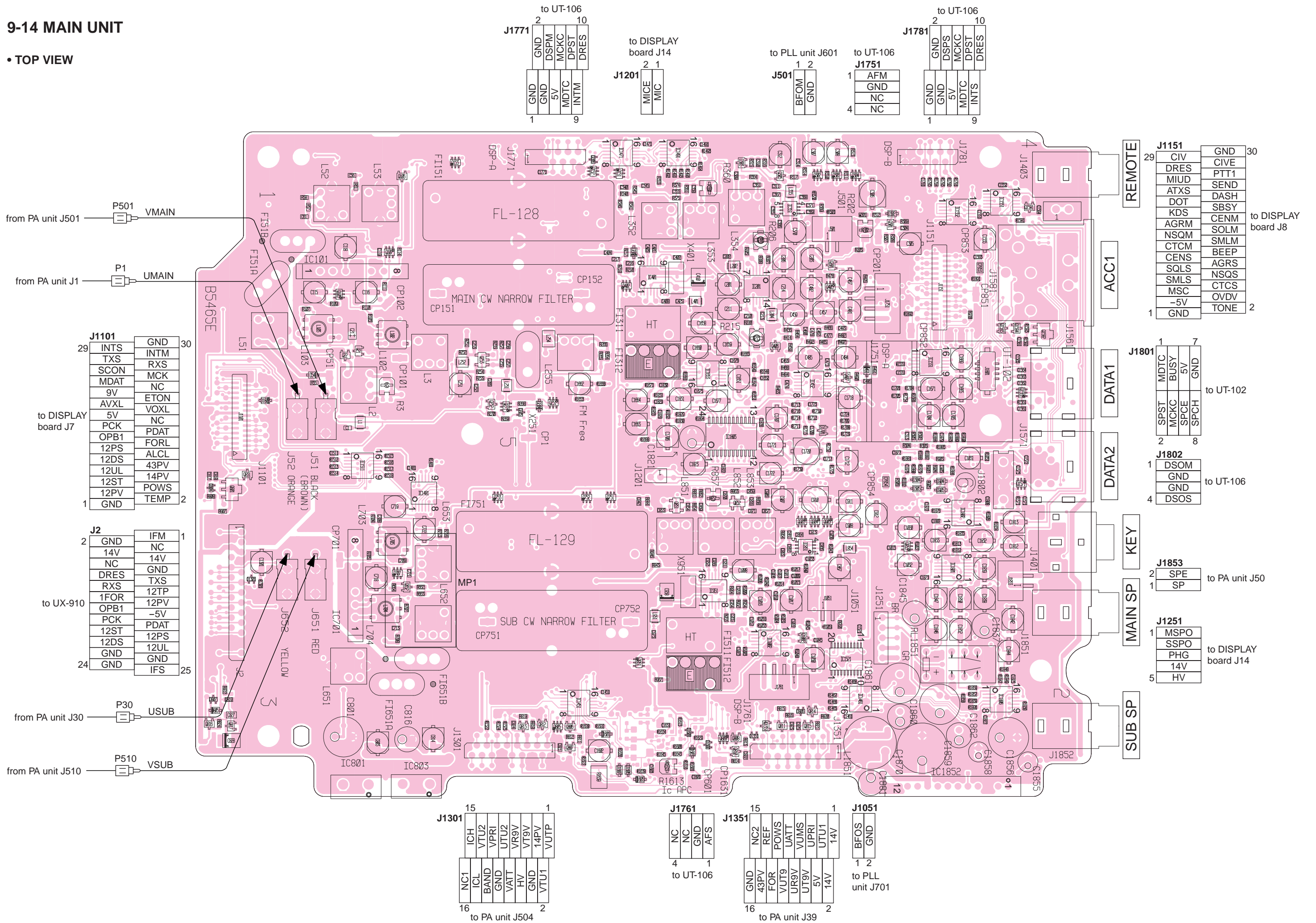


• BOTTOM VIEW (PLL UNIT)

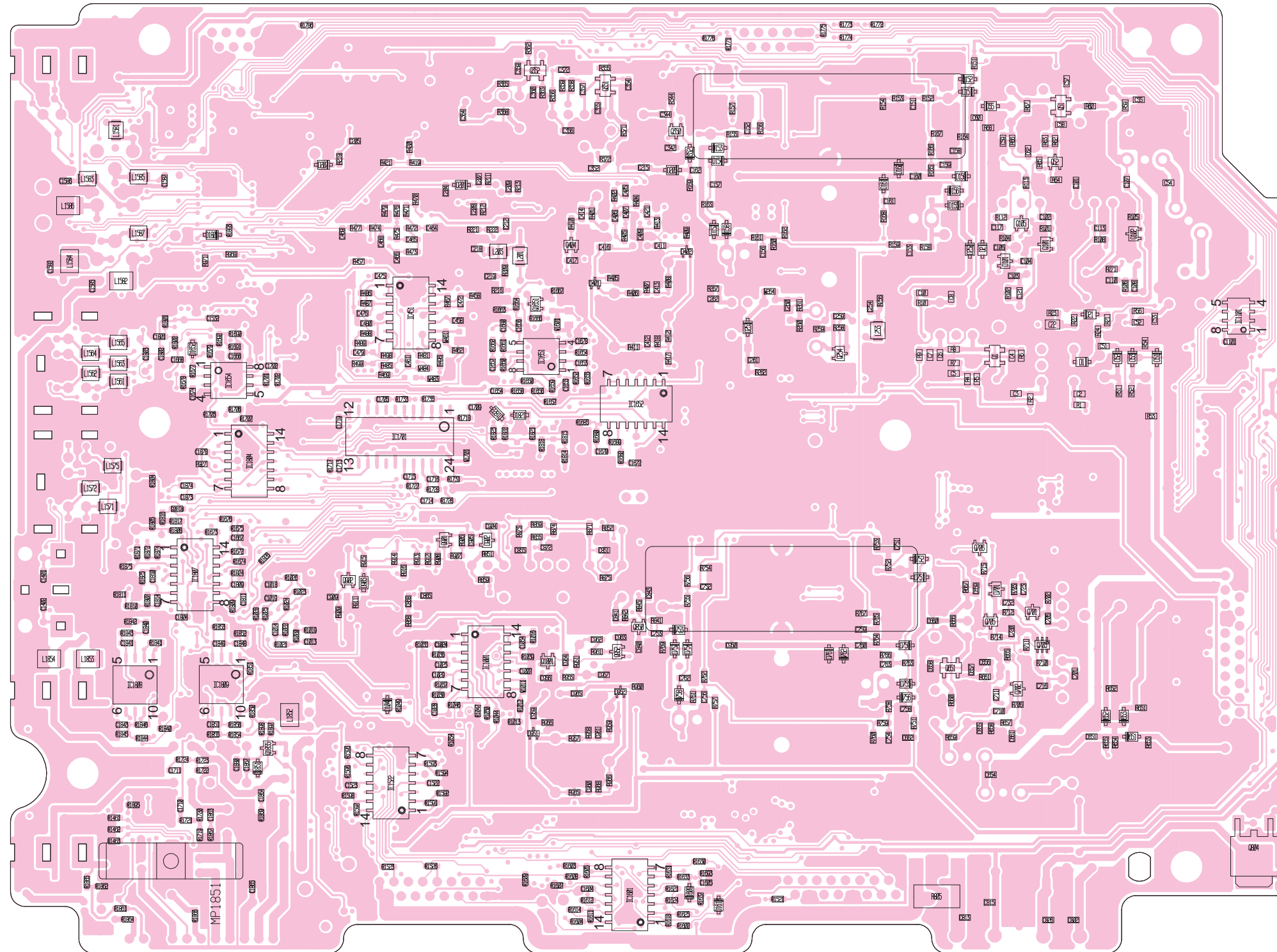


9-14 MAIN UNIT

• TOP VIEW

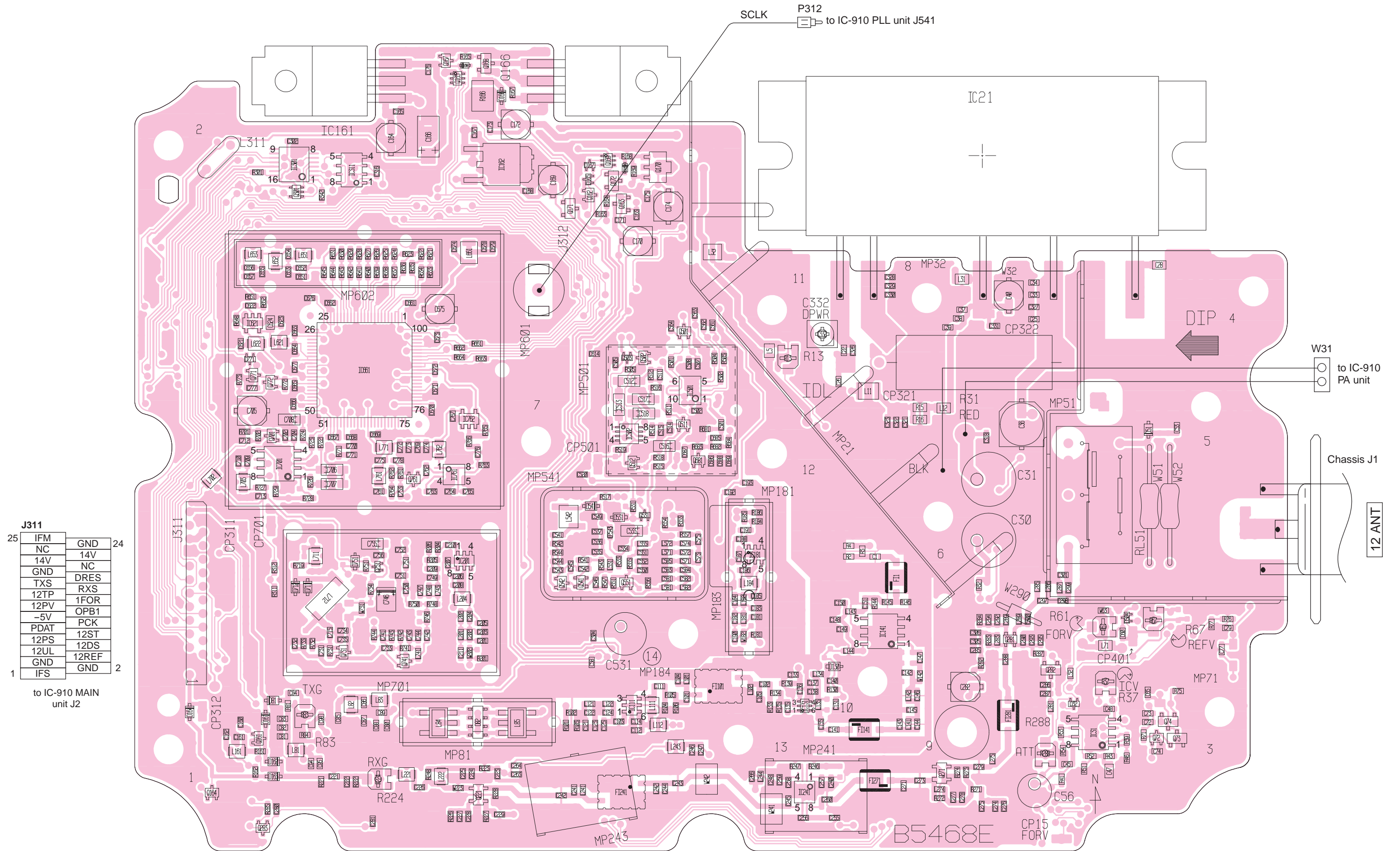


• BOTTOM VIEW (MAIN UNIT)



9-15 UX-910 MAIN UNIT

• TOP VIEW

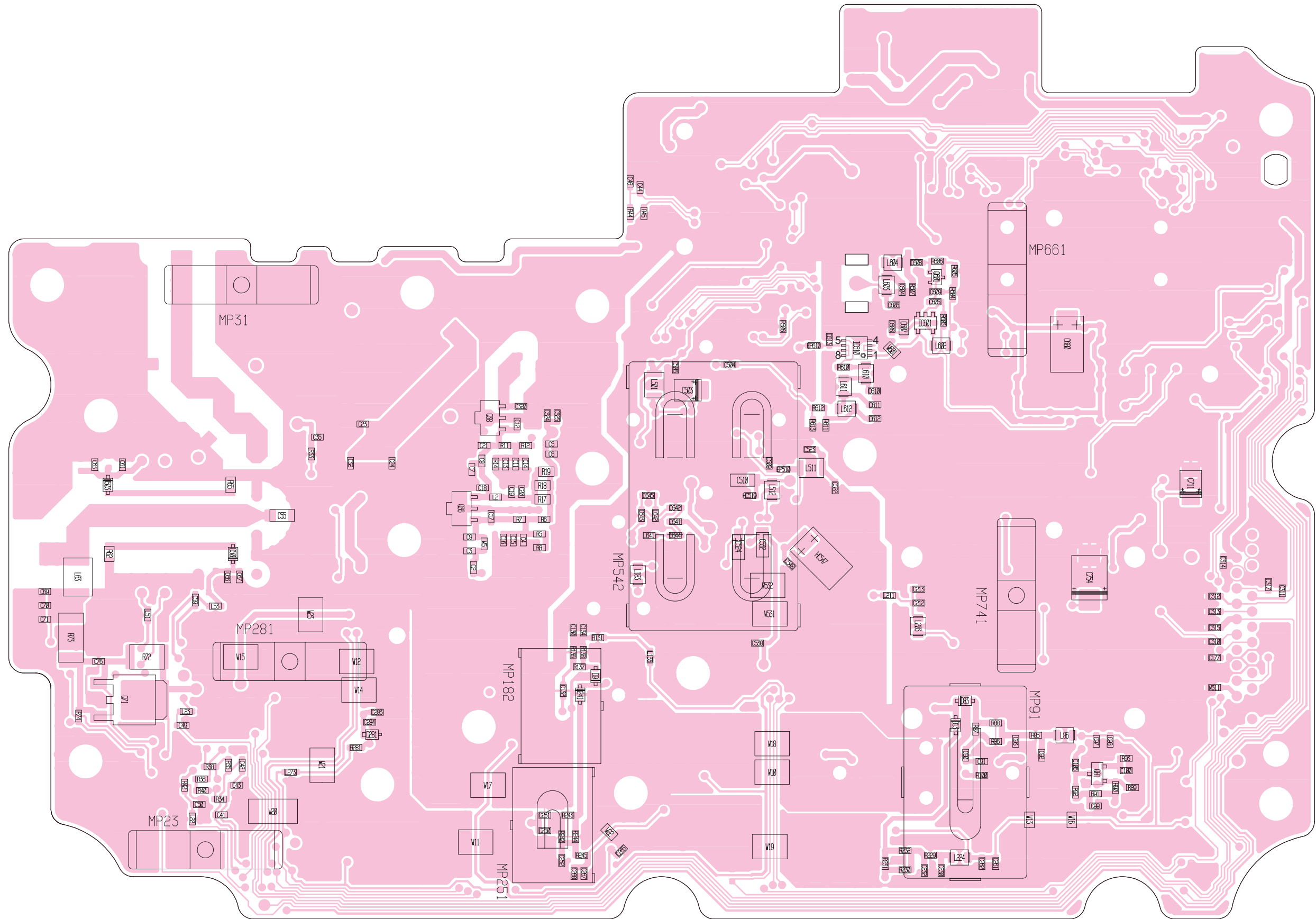


J311

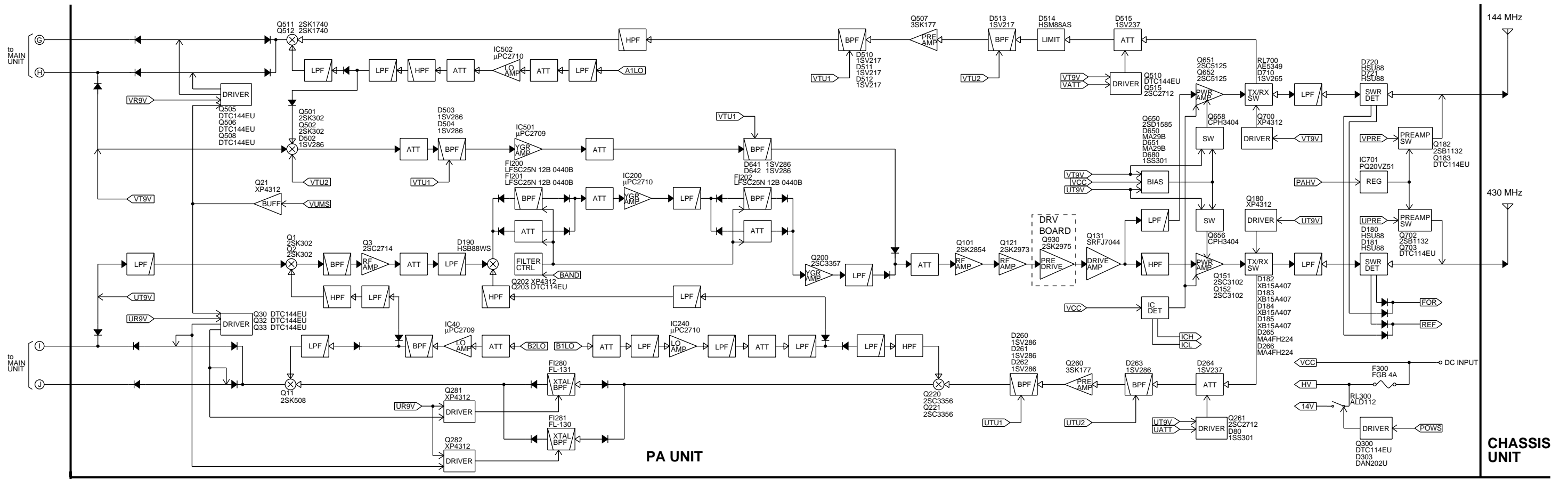
25	IFM	GND	24
	NC	14V	
	14V	NC	
	GND	DRES	
	TXS	RXS	
	12TP	1FOR	
	12PV	OPB1	
	-5V	PCK	
	PDAT	12ST	
	12PS	12DS	
	12UL	12REF	
1	GND	GND	2
	IFS		

to IC-910 MAIN unit J2

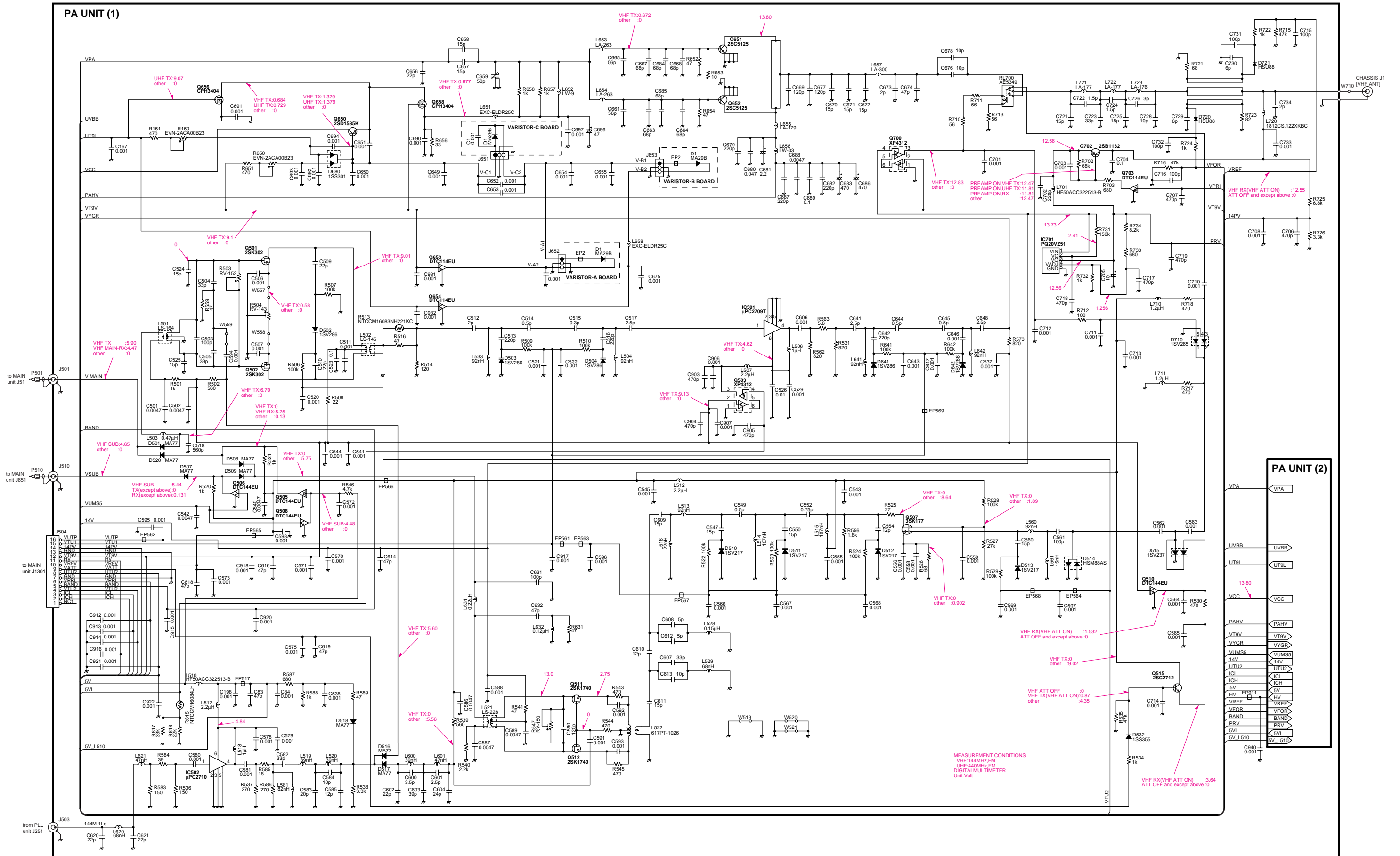
• BOTTOM VIEW (UX-910 MAIN UNIT)



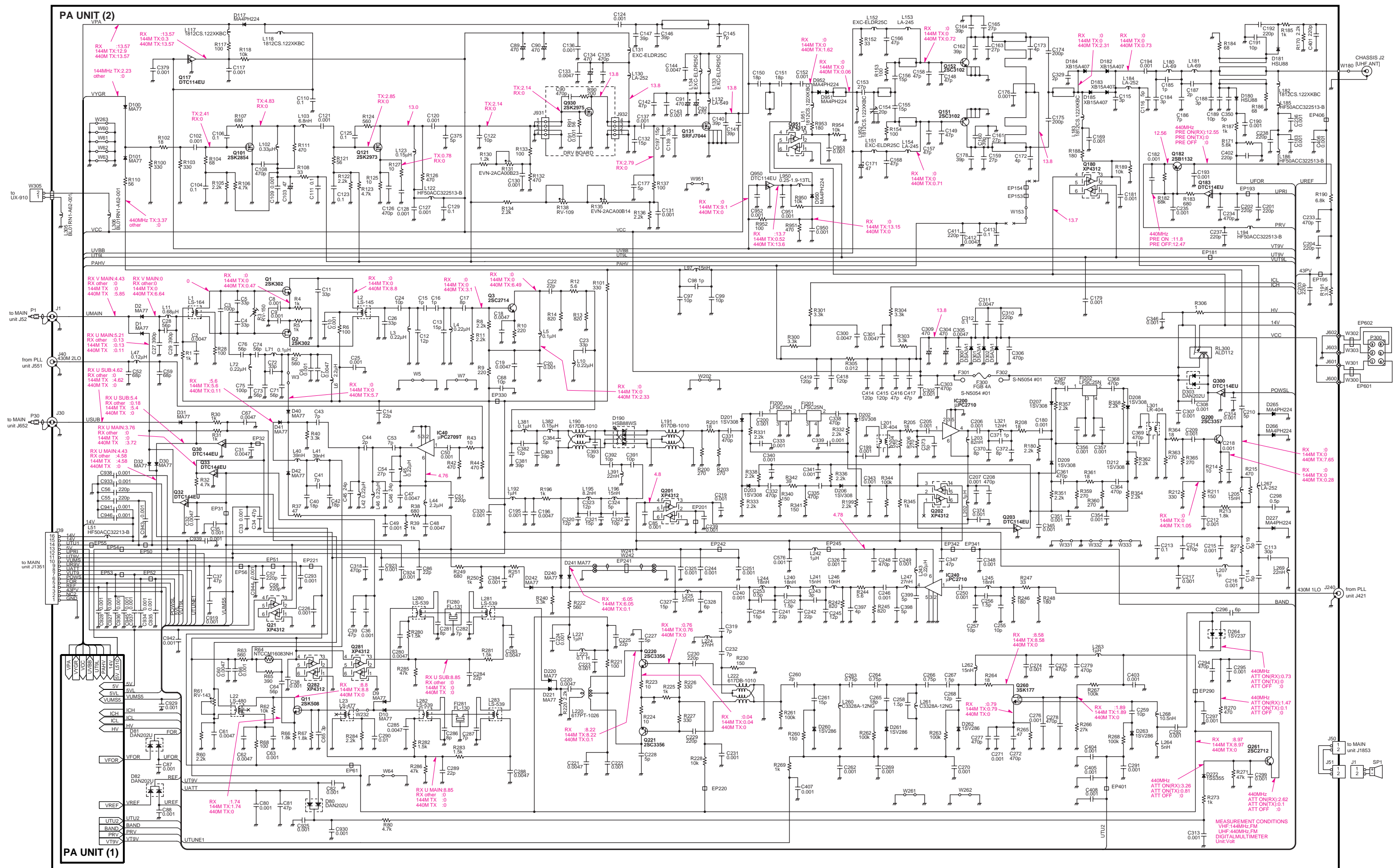
10-2 PA AND PLL UNITS



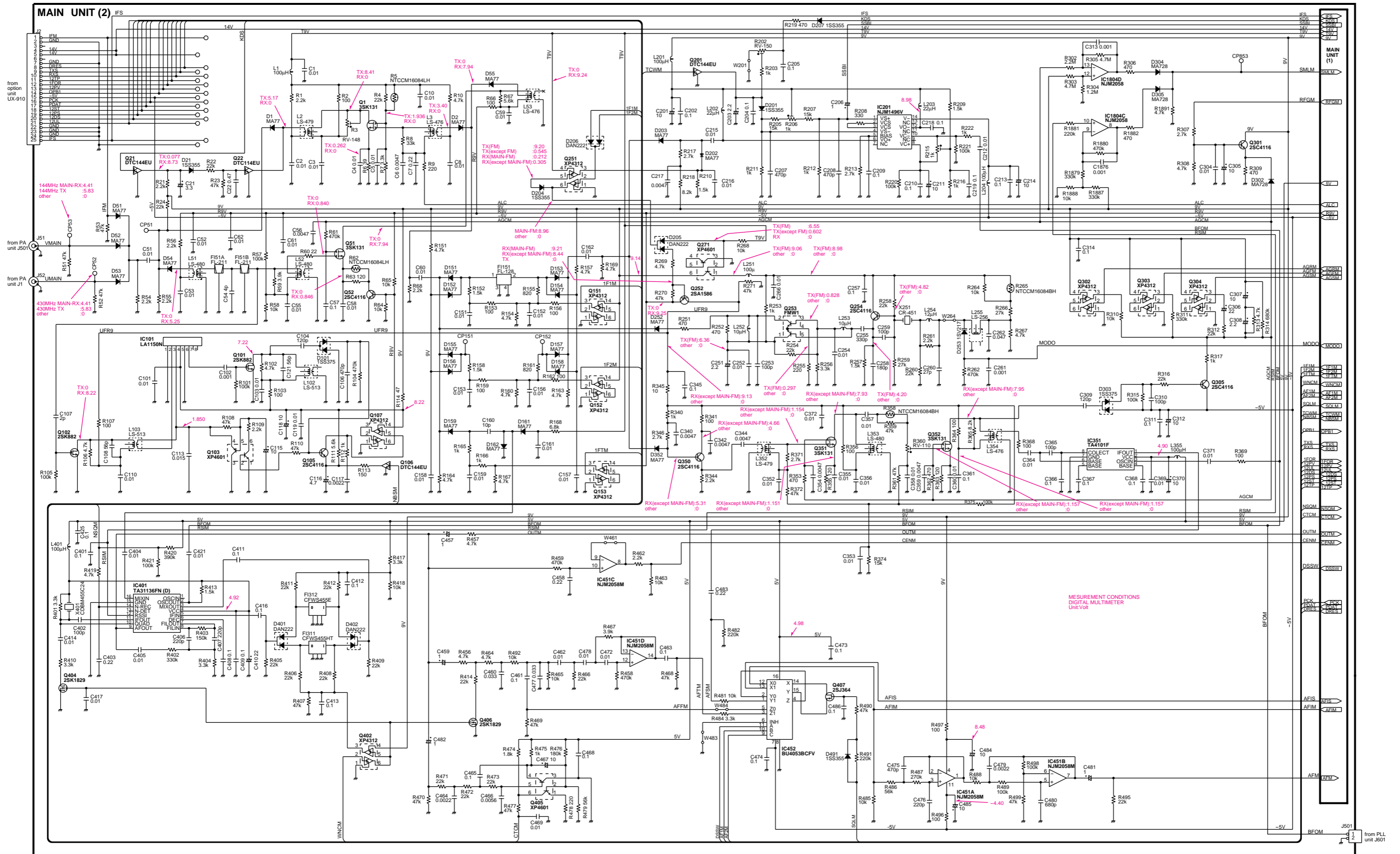
12-3 PA UNIT (1)



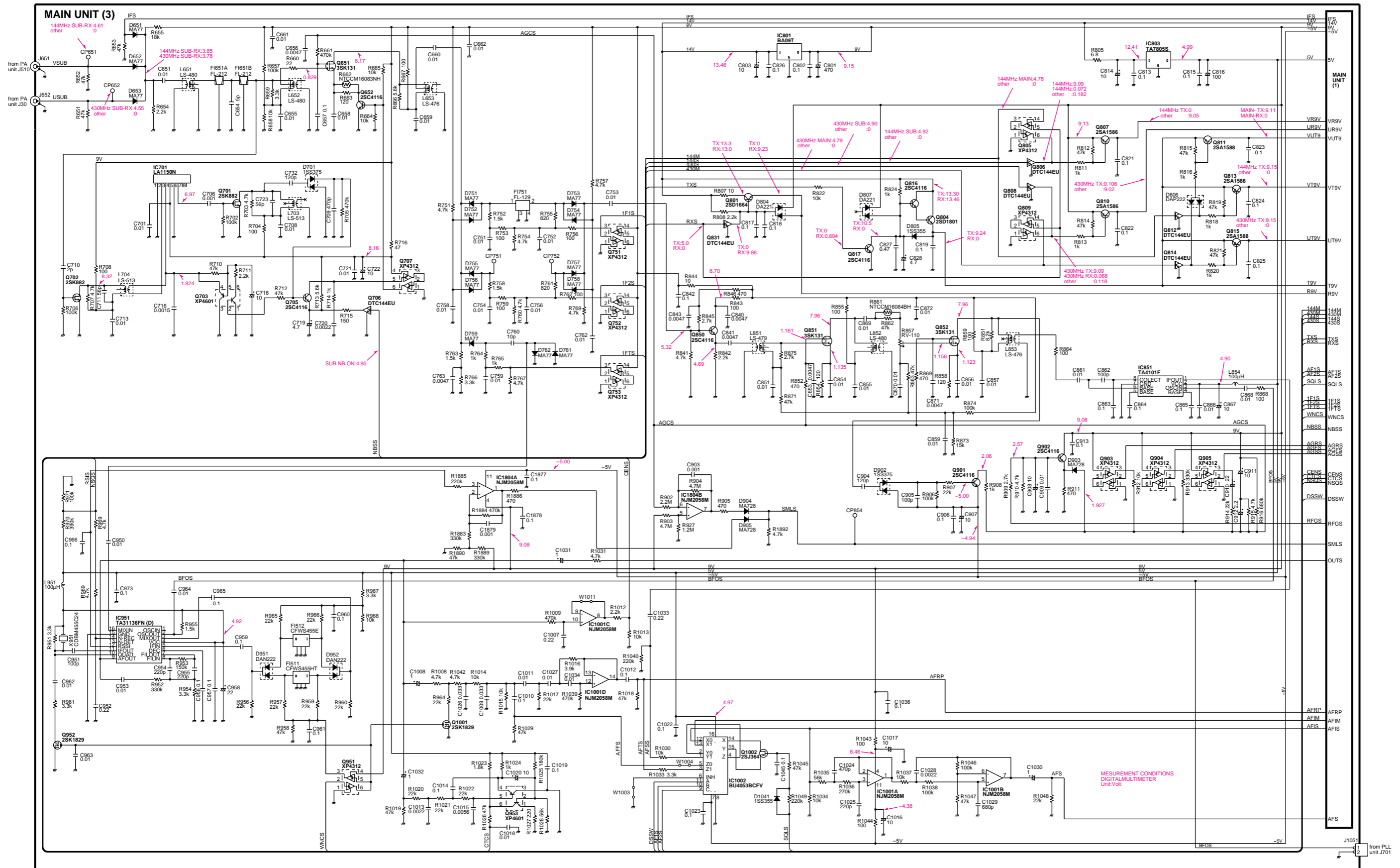
12-4 PA UNIT (2)



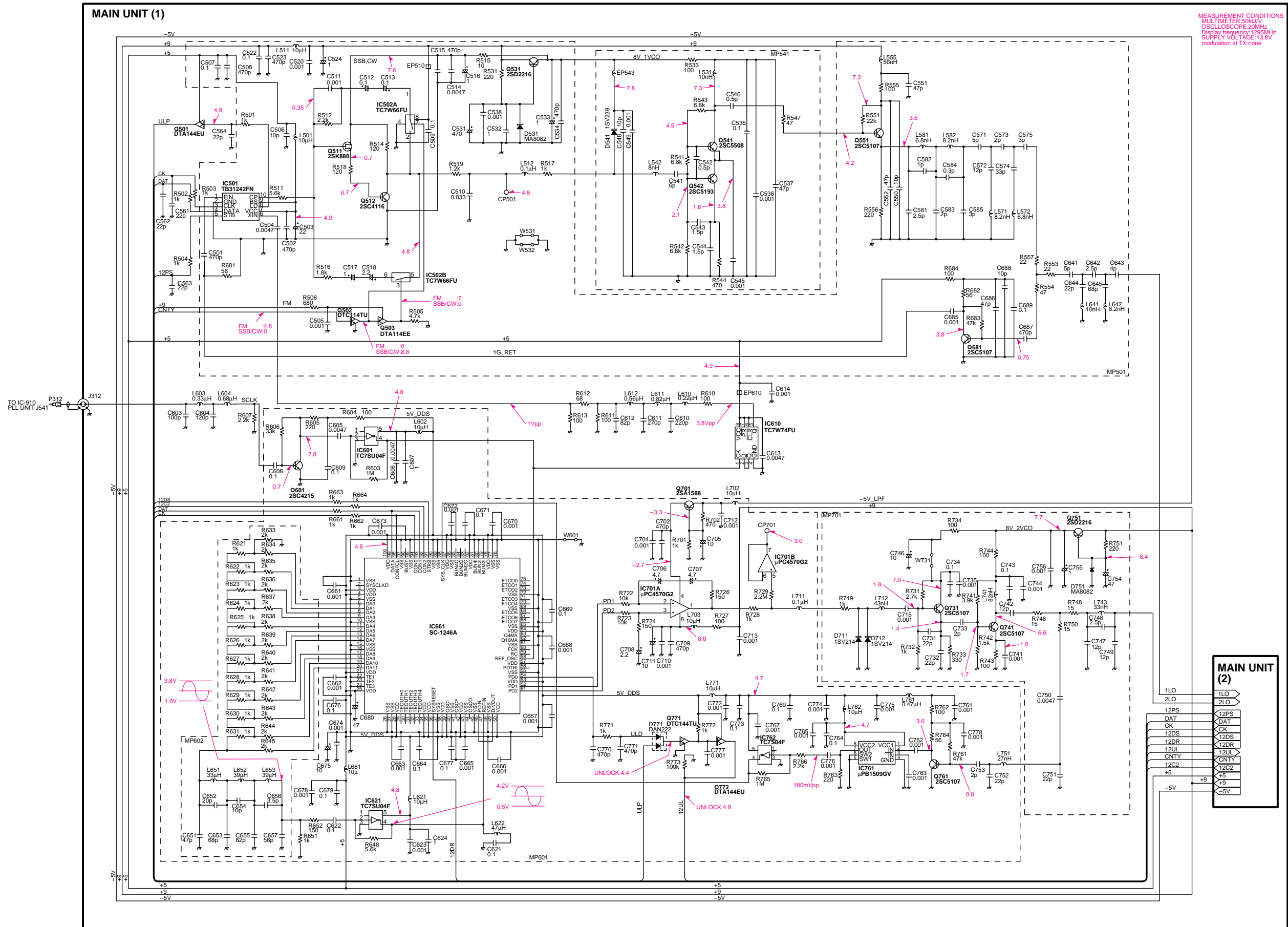
12-6 MAIN UNIT (2)



12-7 MAIN UNIT (3)



12-8 UX-910 MAIN UNIT (1)



MEASUREMENT CONDITIONS
 MULTIMETER: 50kV/V
 OSCILLOSCOPE: 20MHz
 Display Frequency: 125MHz
 SUPPLY VOLTAGE: 13.8V
 modulation at TX:none

12-9 UX-910 MAIN UNIT (2)

